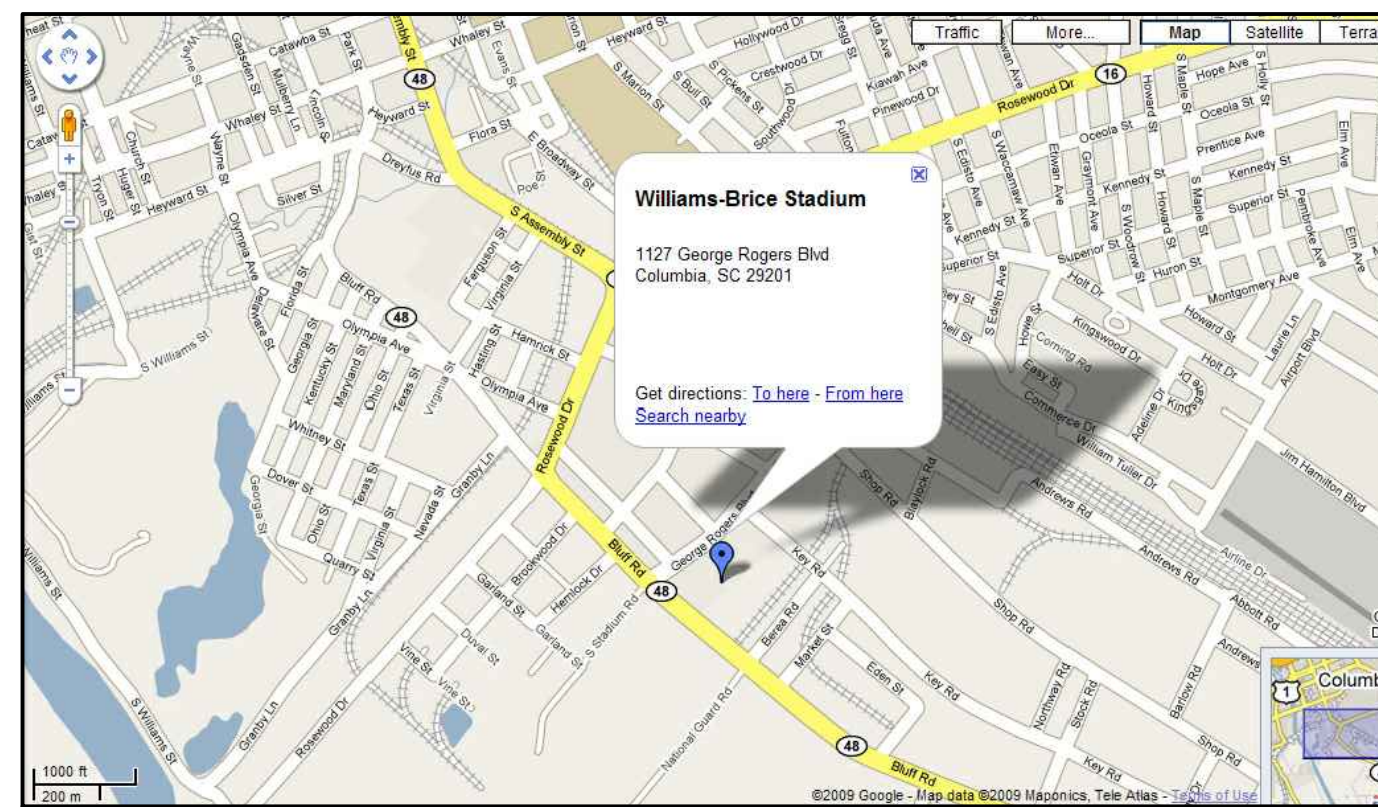


WILLIAMS BRICE STADIUM

Waterproofing (Upper East Deck)

H27-Z057

University of South Carolina



VICINITY PLAN
NOT TO SCALE

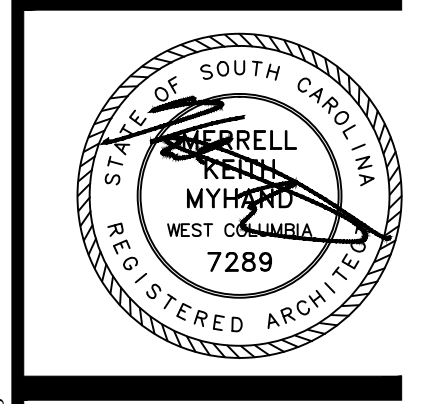
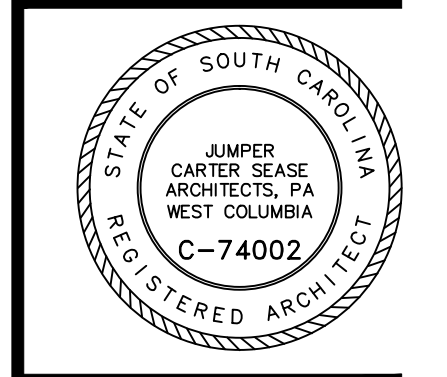
ABBREVIATIONS	PROJECT CONTACTS	INDEX OF DRAWINGS	ALTERNATES
<p>A.C.T. ACOUSTICAL CEILING TILE ALUM. ALUMINUM BD BOARD BLKG BLOCKING C.J. CONTROL JOINT C.T. CERAMIC TILE CMU CONCRETE MASONRY UNIT CONC. CONCRETE CONT. CONTINUOUS CFT CARPET CR CLASSROOM DTL DETAIL E.J. EXPANSION JOINT ELEC. ELECTRICAL EQ EQUAL EXIST/EXG EXISTING EXP EXPANSION FE FIRE EXTINGUISHER FEC FIRE EXTINGUISHER CABINET FF FINISH FLOOR FLR FLOOR FTG FOOTING GALV GALVANIZED GC GENERAL CONTRACTOR GR GUARDRAIL GWB GYPSUM WALL BOARD HM HOLLOW METAL HORIZ HORIZONTAL HR HANDRAIL I.D. INSIDE DIAMETER INSUL INSULATION</p> <p>NOTE: FOR ABBREVIATIONS NOT NOTED ABOVE CONTACT ARCHITECT.</p>	<p>MECH MECHANICAL MFR MANUFACTURER MB MARKER BOARD M.O. MASONRY OPENING N.I.C. NOT IN CONTRACT O.C. ON CENTER O.D. OUTSIDE DIAMETER OPNG OPENING P.B. PROMETHEAN BOARD PL PLATE PLUMB PLUMBING PR PAIR PT PRESSURE TREATED REINF REINFORCED REQD REQUIRED SCHED SCHEDULE SHT. SHEET SIM. SIMILAR SS STAINLESS STEEL STL. STEEL STOR. STORAGE TB TACKBOARD TEMP TEMPERED PT PRESSURE TREATED TYP. TYPICAL VCT VINYL COMPOSITION TILE VERT VERTICAL WD WOOD</p>	<p>JOB SITE</p> <p>CONTRACTOR'S OFFICE</p> <p>OWNER University of South Carolina</p> <p>ARCHITECT Jumper Carter Sease Architects, P.A. 803-791-1020</p>	<p>T101 TITLE, INDEX & ABBREVIATIONS</p> <p>A201 PARTIAL PLAN VIEW - EAST STANDS UPPER DECK</p> <p>A202 PROJECT PHOTOGRAPHS</p> <p>A203 PROJECT PHOTOGRAPHS</p> <p>ADD ALTERNATE #1: REPLACE VERTICAL CONTROL JOINTS (CJV) ALONG ENTIRE TOP WALL AND BOTH END PANEL RUNS AT NORTH & SOUTH. SEE SHEET A201.</p> <p>ADD ALTERNATE #2: REPLACE EXISTING UREFLEX JOINT SYSTEM AT TYPE "A" JOINTS AS INDICATED ON SHEET A201 NEAR VOMITORIES WITH NEW MATCHING UREFLEX JOINTS.</p>

Jumper

Carter

Sease

Architects
PA
412 Meeting Street
West Columbia
South Carolina



WBS - WATERPROOFING II (UPPER EAST DECK)
 UNIVERSITY OF SOUTH CAROLINA
 COLUMBIA, SOUTH CAROLINA

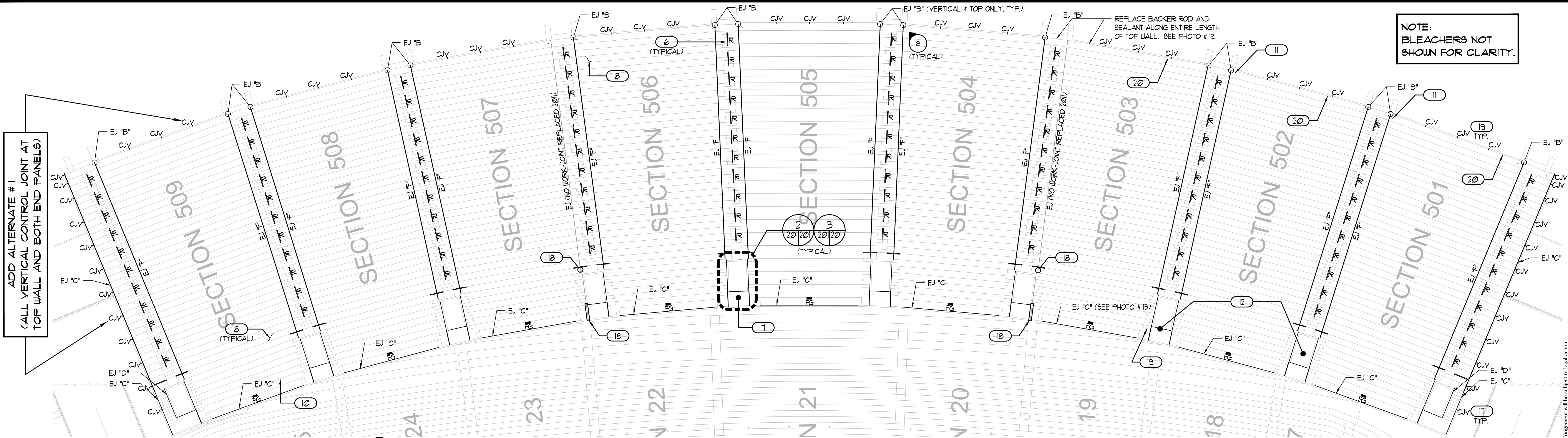
REVISIONS:

DRAWN BY: SL
CHECKED BY: KM
COMM NO: 12115
DATE: MARCH 28, 2013
SHEET TITLE:

TITLE, INDEX & ABBREVIATIONS

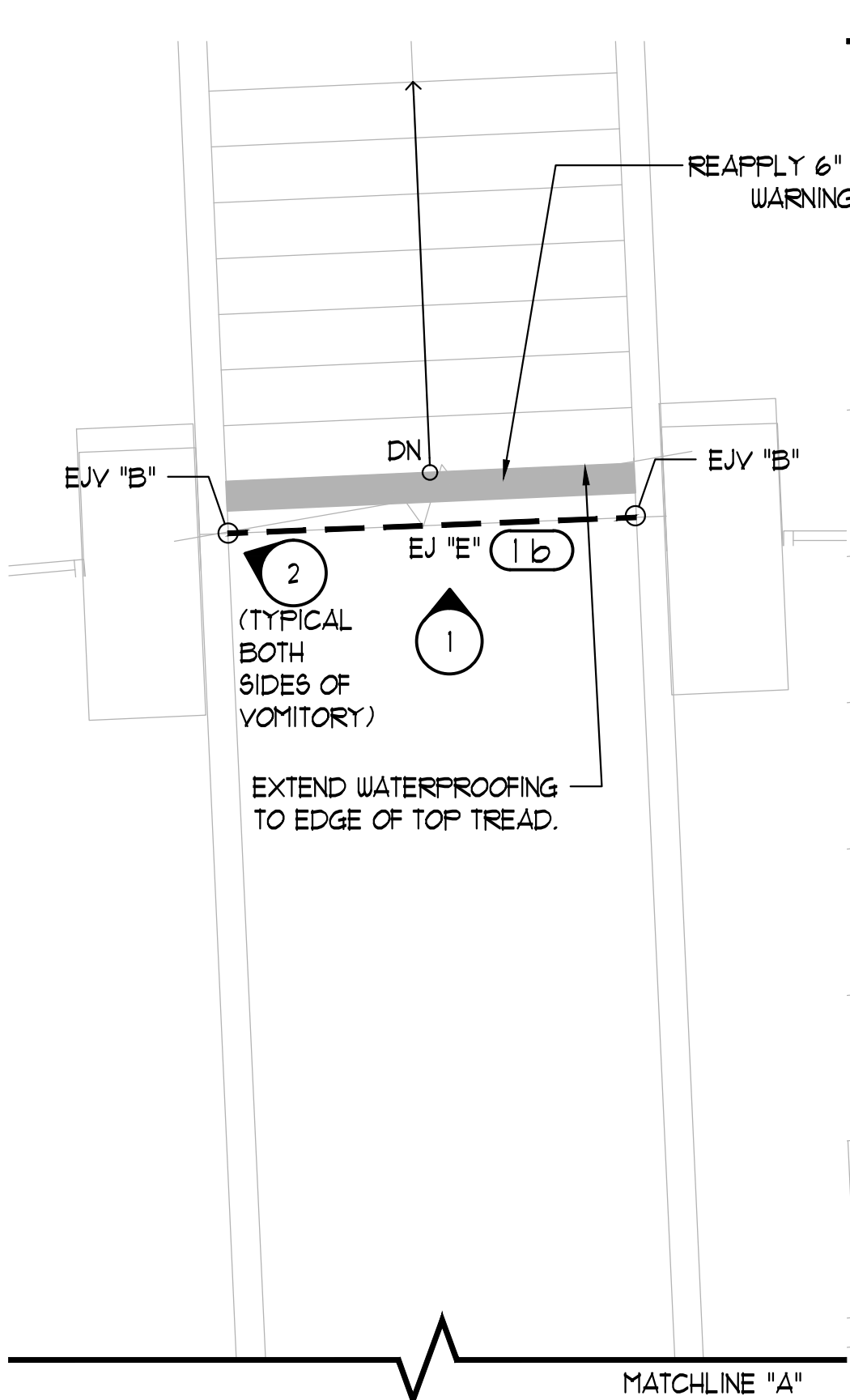
SHEET NO:
T101

these drawings are the property of Jumper Carter Sease Architects, P.A. and may not be reproduced, copied or used in whole or in part without written consent of the architect and any infringement will be subject to legal action.

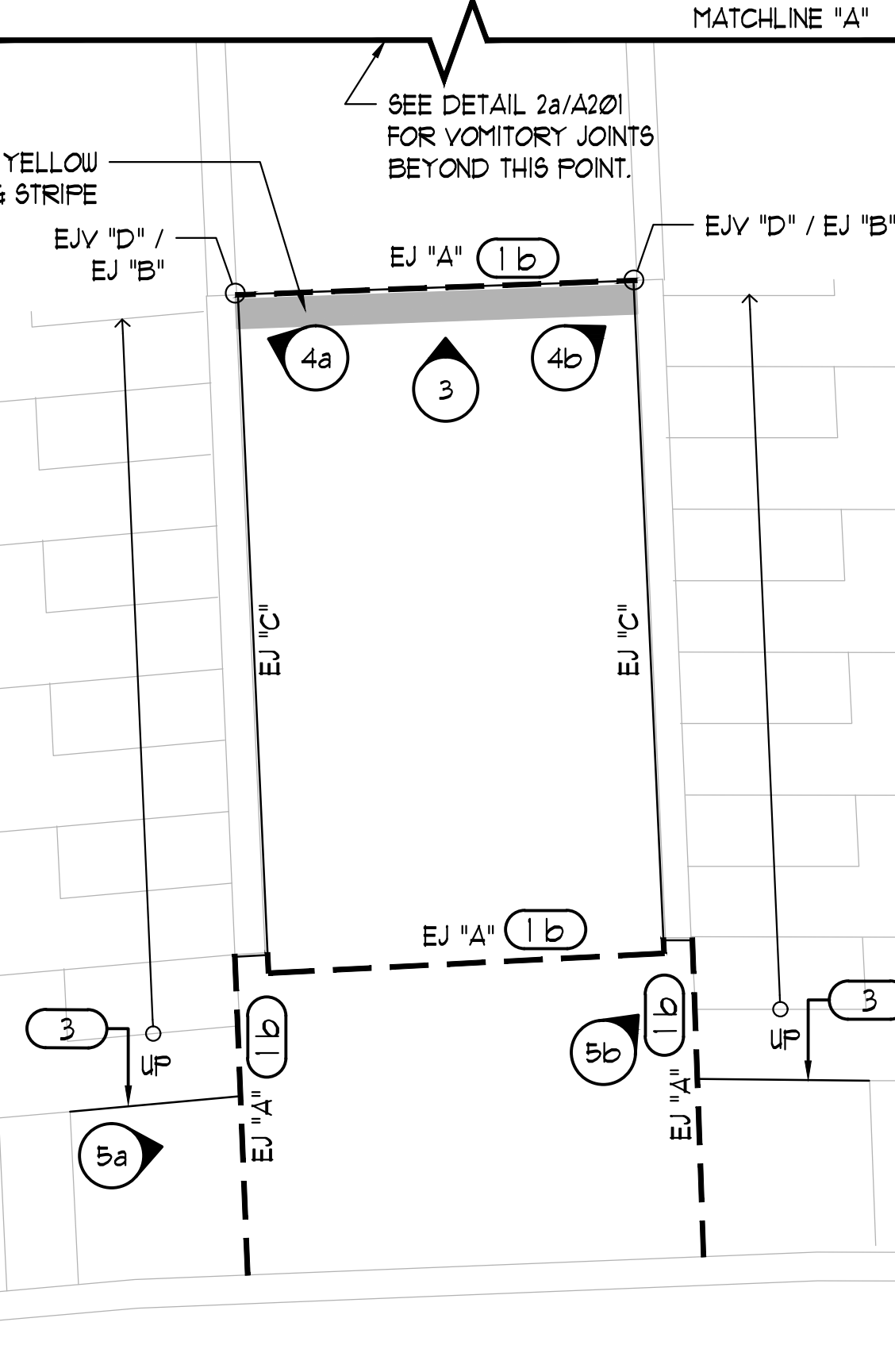


NOTE:
BLEACHERS NOT
SHOWN FOR CLARITY.

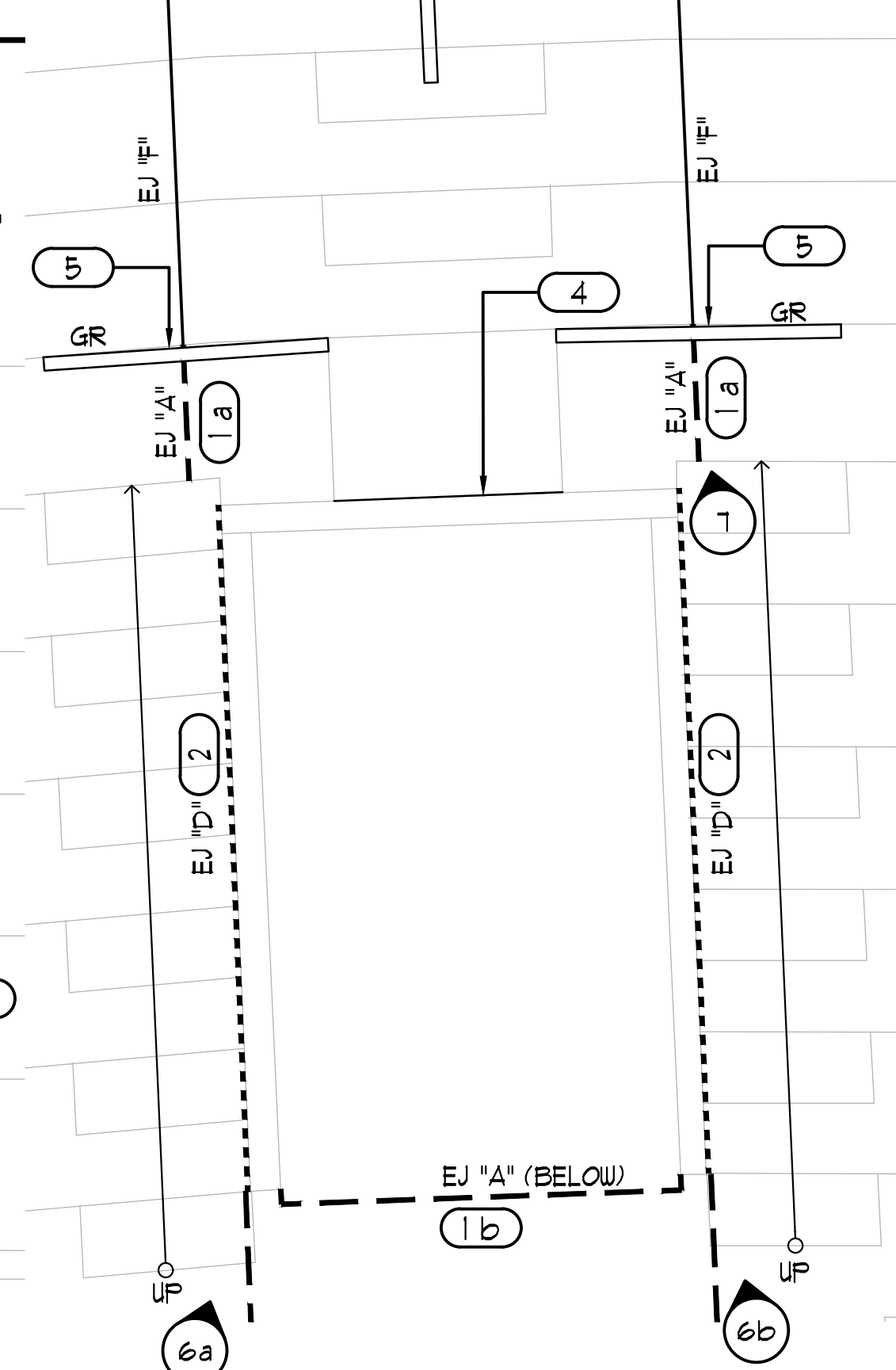
1/16" = 1'-0"
SCALE



2a
SCALE



2b
SCALE



3
SCALE

LEGEND:
EJ EXPANSION JOINT HORIZONTAL OR STEPPED.
EJV EXPANSION JOINT VERTICAL.
CJV CONTROL JOINT VERTICAL.
R EXISTING STEEL ISLE RAILINGS TO REMAIN PLACE.
FG EXISTING FLOOR GRATE. SEE PHOTO # 11. PROVIDE MISSING COVERS. (ASSUME 5 EACH).
X OR X PHOTO REFERENCE, SHEET A202 (SHEET A203 AS NOTED).

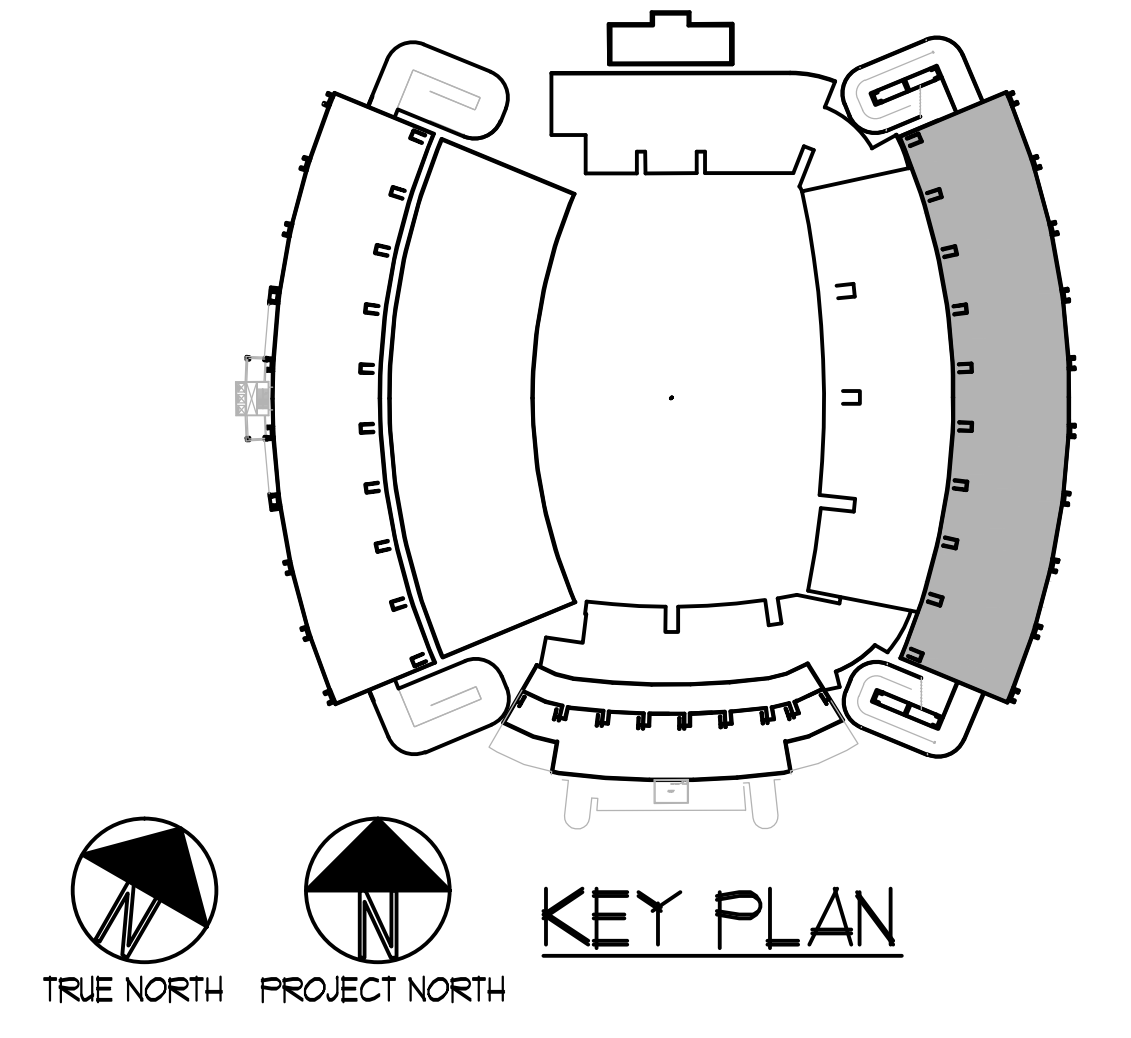
GENERAL NOTES:

- THIS WORK CONSISTS OF REPAIR OF EXISTING STEEL WELD PLATES AND RELATED STEEL CLIP CONDITIONS AND EXPOSED REBAR CONDITIONS ALONG WITH REPLACEMENT OF EXISTING CONTROL JOINTS, EXPANSION JOINTS, AND EXPANSION COVERS - ALL PRIOR TO THE APPLICATION OF A NEW WATERPROOF DECK COATING SYSTEM ALSO INCLUDED IN THIS WORK. MINOR CONCRETE REPAIR IS ALSO INCLUDED.
 - THE CONTRACTOR IS REQUIRED TO VISIT THE PROJECT SITE PRIOR TO SUBMITTING BID AND THOROUGHLY FAMILIARIZE HIMSELF WITH ALL EXISTING CONDITIONS RELATING TO THIS PROJECT. SUBMISSION OF A BID WILL BE CONSIDERED AS EVIDENCE THAT THE CONTRACTOR HAS VISITED THE SITE OF WORK. ANY DISCREPANCIES OR QUESTIONS ARE TO BE DIRECTED TO THE ARCHITECT PRIOR TO BID.
 - THE CONTRACTOR IS TO PROVIDE A LETTER ACCOMPANYING THE BID FORM FROM THE TRAFFIC COATING MANUFACTURER, ON THE MANUFACTURER'S LETTER HEAD, CERTIFYING THAT THE CONTRACTOR IS APPROVED FOR THE JOINT AND SEVERAL WARRANTIES AS SPECIFIED FOR THIS PROJECT.
 - THE CONTRACTOR WILL HAVE ACCESS TO THE STADIUM MONDAY THROUGH FRIDAY AND TIME ON WEEKENDS ONLY IF APPROVED BY THE OWNER 1 DAYS IN ADVANCE OF SUCH WEEKEND. ALL WORK MUST BE 100% COMPLETED BY FRIDAY, AUGUST 23, 2013. THE CONTRACTOR IS TO STRATEGIZE HIS WORK SCHEDULE AND SUBMITTALS BASED ON THE SCOPE OF WORK TO MEET THIS DEADLINE.
 - THE OWNER WILL BE RESPONSIBLE FOR REMOVAL AND REINSTALLATION OF THE BLEACHERS AND SEATING.
- UPPER EAST:** THE OWNER'S SEATING CONTRACTOR WILL REMOVE AND REINSTALL ALL BLEACHERS. THE TREAD EDGE CLIPS ARE TO REMAIN AND BE WATERPROOFED BY WATERPROOFING CONTRACTOR. THE SEATING CONTRACTOR WILL REMOVE ALL DRIVE PINS AND STUDS AT VERTICAL FACE AS REQUIRED. WATERPROOFING CONTRACTOR WILL GRIND SUCH FASTENERS INTO CONCRETE AND PREPARE TO RECEIVE WATERPROOF COATING PER COATING MANUFACTURER'S INSTRUCTIONS. ANY FASTENERS TO REMAIN FOR REUSE WILL BE MARKED BY THE SEATING CONTRACTOR. ALL OTHER REMAINING STUDS WILL BE REMOVED BY WATERPROOFING CONTRACTOR (SEE PHOTO # 30/A203). THE BLEACHERS AND ANY NEW FASTENERS WILL BE PROVIDED BY THE BLEACHER CONTRACTOR. THE SEQUENCING OF BLEACHER REMOVAL, STACKING LOCATION AND REINSTALLATION MUST BE COORDINATED BY ALL PARTIES AS THE BLEACHERS WILL BE STACKED/STORED ON AREAS OF THE UPPER DECK DURING WATERPROOFING. IT IS EXPECTED THAT WATERPROOFING EFFORTS START AT EACH END AND PROCEED TOWARD THE CENTER. THE CONTRACTOR MUST INCLUDE THE CONSTRUCTION SCHEDULE WITH THE BID.
- THE CONTRACTOR IS TO INCLUDE THE BLEACHER REMOVAL IN HIS PROJECT SCHEDULE. THE REMOVAL SHALL BE CLOSELY COORDINATED WITH THE OWNER'S SEATING CONTRACTOR PRIOR TO COMPLETION OF THE SCHEDULE. THE CONTRACTOR MUST INCLUDE THE CONSTRUCTION SCHEDULE WITH THE BID.

- HYDROBLAST WILL BE ALLOWED WITH A MAXIMUM PRESSURE OF 5,000 PSI. THE CONTRACTOR WILL BE REQUIRED TO USE EXTREME CAUTION AND DILIGENCE WHEN USING WATER. THE CONTRACTOR IS REQUIRED TO INSPECT THE EXISTING JOINTS PRIOR TO THE USE OF WATER, AND ANY OPEN OR POTENTIAL WATER ENTRY JOINTS WILL NEED TO BE SEALED PRIOR TO THE USE OF WATER. ANY DAMAGE TO THE SPACES BELOW CAUSED BY THE CONTRACTOR WILL BE THE CONTRACTOR'S RESPONSIBILITY TO REPAIR OR REPLACE AT THE OWNER'S DISCRETION.
- THE CONTRACTOR IS REQUIRED TO MAINTAIN A CLEAN WORK SITE AT ALL TIMES. THE WORK AREA MUST BE CLEANED UP AT THE END OF EACH DAY. MINIMUM CONTRACTOR SHALL NOT ALLOW TRASH OR DEBRIS TO BECOME WIND BORNE SO AS TO LITTER UP ADJACENT AREAS OF THE STADIUM.
- CONTRACTOR IS TO PROTECT ALL EXISTING CONSTRUCTION FROM DAMAGE. ANY DAMAGE TO EXISTING CONSTRUCTION WILL BE REPAIRED OR REPLACED AT THE OWNER'S DISCRETION AND AT THE EXPENSE OF THE CONTRACTOR.
- ALL CONTROL JOINT AND EXPANSION JOINT REPLACEMENT MUST INCLUDE THE ENTIRE JOINT SYSTEM AND MUST BE INSTALLED IN COMPLIANCE WITH JOINT SYSTEM MANUFACTURER AND WATERPROOF DECK COATING SYSTEM MANUFACTURER'S WRITTEN INSTRUCTIONS. COORDINATION MUST ALSO BE MADE FOR THE CONTINUOUS CONTROL JOINTS ON THE RISERS AT THE CONCRETE REPAIR CONDITIONS. CONTRACTOR SHALL VERIFY ALL JOINT WIDTHS AS SOME WILL VARY.
- MINIMAL CONCRETE REPAIR AT EDGES OF SOME JOINTS, BLEACHER CLIPS AND TREAD EDGES, IS EXPECTED AND SHALL BE PROVIDED. REMOVE LOOSE CONCRETE, SAIL CUT, CHIP AND CLEAN, 4 APPLY BONDING AGENT 4 CONCRETE REPAIR MORTAR. PROVIDE SIKA 211 FOR DEEP CONDITIONS AND FORM. USE SIKA TOP 122 PLUS FOR SHALLOW CONDITIONS. FOLLOW REPAIR MORTAR MANUFACTURER'S WRITTEN INSTRUCTIONS 4 PER ACI RAP BULLETIN 1. EQUAL PRODUCTS BY BASF 4 EUCLID ARE ACCEPTABLE. SUBMITTAL TO ARCHITECT IS REQUIRED. SEE PHOTO # 9.
- NOT USED.
- NOT USED.
- CONTRACTOR IS TO SHIFT OR REALIGN EXISTING STEPS AS REQUIRED TO PROVIDE WATER TIGHT CONDITION FOR THE JOINT SYSTEM. ANY BROKEN STEPS ARE TO BE REPLACED, INCLUDING EXISTING BRASS INLAY AND REINSTALLED USING 2" LONG 3/8" SMOOTH PINS IN 1/2" HOLE. SEAL HOLE IN SLAB AROUND PIN AS REQUIRED. ALL STEPS ARE TO BE RESET IN A CONSISTENT MANNER AND MINIMAL SPACING FROM VOMITORY WALLS.
- THE WATERPROOF SYSTEM AT THE VOMITORY TUNNELS SHALL EXTEND TO THE REAR OF THE TUNNEL, AS INDICATED. REAPPLY THE 6" YELLOW STRIPES (2 PER TUNNEL). SEE PHOTOS # 1, 3.
- WATERPROOF DECK COATING SYSTEM COLORS:
a. OVERALL FIELD COLOR: GRAY AS SELECTED FROM MANUFACTURER'S FULL RANGE OF COLORS. TO MATCH PREVIOUS COATED SURFACES.
b. 4" WIDE BY TREAD WIDTH CONTRASTING STRIPE AT NOSING EDGE COLOR: GARNET TO MATCH UNIVERSITY GARNET, LOCATED AT ALL ISLE WAY 4 STEP NOSINGS. SEE RECENT WORK AT LOWER WEST STANDS. TWO COATS PER STRIPE.
- WATER PROOF TO EDGE OF ALL FLOOR AND FLOOR/WALL GRATES. SEE PHOTO # 11/A202.
- NOT USED.
- CONTRACTOR SHALL TAKE MEASURES NOT TO DAMAGE EXISTING PAINTED SURFACES. CONTRACTOR IS TO TOUCH UP PAINT AT JOINT LOCATIONS AROUND VOMITORIES OR WALL SLAB PAINTED SURFACES. PAINT MUST BE SAME AS EXISTING AND OBTAINED FROM SHERWIN WILLIAMS IN "5C GARNET" COLOR.
- THE CONTRACTOR IS RESPONSIBLE FOR ALL LIFE SAFETY METHODS 4 PRACTICES.

- SEAL ALL INSIDE CORNERS / OPEN JOINTS OF ALL STEPS FOR A WATER TIGHT CONDITION PRIOR TO WATER PROOFING.
 - REMOVE STEEL PLATES 4 PINS. REPAINT CONC. PER GENERAL NOTE # 18. APPROXIMATELY 25 CONDITIONS. FIELD VERIFY QUANTITY.
 - ALL TEMPORARY FACILITIES WILL BE THE RESPONSIBILITY OF THE CONTRACTOR.
 - REMOVE AND REINSTALL STEPS AS REQUIRED ALONG SIDE OF TUNNEL TO INSTALL NEW EXPANSION JOINT SYSTEM. THE CONTRACTOR IS TO SECURE STEPS FROM FUTURE MOVEMENT OR SHIFTING. ANY DAMAGED STEPS ARE TO BE REPLACED AT THE CONTRACTOR'S EXPENSE. REUSE INLAD BRASS ROW IDENTIFICATION NUMBERS IN ANY REQUIRED NEW STEPS. (TYPICAL AT ALL VOMITORIES)
 - SEE PHOTO # 30/A203 FOR TYPICAL BLEACHER BRACKET CONDITION.
- KEY NOTES:**
- EXISTING UREFLEX SLAB RECESS AT THIS TREAD.
 - EXISTING UREFLEX SLAB RECESS AT THIS LOCATION.
 - MOVE STEPS AND INSTALL "WABO-SEISMIC WEATHER SEAL" 4 RESET STEPS. TWO DOUELS PER STEP. DOUELS TO BE SET IN EPOXY AT TREAD OF STRUCTURE, BUT NOT TO STEP. SEE GENERAL NOTE # 19 ALSO. TYPICAL ALL VOMITORIES.
 - REMOVE LOOSE GROUT AT JOINT AND REGROUT IN ACCORDANCE WITH WATERPROOFING MANUFACTURER'S RECOMMENDATIONS. SEE PHOTO # 12.
 - REPLACE EXISTING BACKER ROD AND SEALANT AT EACH VOMITORY OR PROVIDE IF MISSING. PROVIDE CANT BEAD. SEE PHOTO # 13.
 - REMOVE EXISTING STEEL GUARD RAILS AT EACH VOMITORY AND REINSTALL UPON COMPLETION OF WATERPROOFING. SEE PHOTO # 14.
 - EXISTING STEEL RAILINGS AT WATERPROOFING SURFACE TO REMAIN IN PLACE. WATERPROOF 4 SEAL AT SLAB.
 - REAPPLY GARNET AT AREA SHOWN IN PHOTO # 11 ALONG WITH BLACK TEXT.
 - DIETERIORATED OR RUTTED DIETERIORATED SLAB CRACK. GRIND OUT AND EPOXY FILL PRIOR TO WATERPROOFING PER WATERPROOFING MANUFACTURER'S INSTRUCTIONS. SEE PHOTO # 20. NOTE: SOME ARE NOT THIS BAD, BUT MUST BE REPAIRED. FIELD VERIFY QUANTITY 4 REPAIR ALL.
 - EXISTING SPALDING TREAD. REMOVE BAD CONCRETE AND RE-POUR TREAD. CLEAN AND RE-POUR STEP CORNER. DRILL ANCHOR PINS INTO EXISTING CONCRETE USING THE "HYA ADHESIVE SYSTEM" BY HILTI WITH AN EMBEDMENT DEPTH OF 3" OR APPROVED EQUAL. SEE PHOTO # 21/A202. ASSUME 5 SIMILAR CONDITIONS FOR REPAIR. SEE PHOTO # 21.
 - REPAIR FRACTURED CONCRETE EDGES. SEE PHOTO # 22 FOR EXAMPLE. FIELD VERIFY QUANTITY.
 - EXPOSED ABANDONED STUDS, PIPE OR OTHER METAL GRIND TO BELOW CONCRETE SURFACE. REPAIR PER GENERAL NOTE # 19 PRIOR TO WATERPROOFING. VERIFY THESE AND SIMILAR CONDITIONS AND REPAIR ALL. SEE PHOTO # 23.
 - PREVIOUS MESH 4 MASTIC ATTEMPT TO REPAIR LEAKS AT VOMITORY. REMOVE ALL MATERIAL 4 PREPARE SURFACES FOR JOINT REPLACEMENT 4 WATERPROOFING PER MANUFACTURER'S INSTRUCTIONS. SEE PHOTO # 24/A203.

- EXPOSED STEEL REBAR SEE PHOTOS # 10 4 23/A203. NOTE THAT THESE ARE WORST CASE PHOTOS AS THE DEGREE OF EXPOSURE VARIES. CONTRACTOR IS TO REPAIR AND TREAT AS REQUIRED PER WATERPROOF DECK COATING MANUFACTURER'S WRITTEN RECOMMENDATIONS PRIOR TO COATING. REPAIR CONCRETE WHERE REQUIRED PRIOR TO COATING PER KEYNOTE 1 BELOW.
 - EXPOSED AND SEMI-EXPOSED STEEL CLIP AT RISER. REMOVE ALL FRACTURED GROUT 4 SEALANT COVERING AND REPAIR PER REPAIR PRODUCT MANUFACTURER'S WRITTEN RECOMMENDATIONS AND IN ACCORDANCE WITH WATERPROOF COATING MANUFACTURER'S WRITTEN INSTRUCTIONS. SEE PHOTO # 25/A203. CONTRACTOR IS TO FIELD VERIFY PRIOR TO BID THE FOLLOWING NUMBER OF EXPOSED OR SEMI-EXPOSED CLIPS PER SECTION TO BE REPAIRED PRIOR TO APPLICATION OF WATERPROOF DECK COATING SYSTEM (UPPER EAST) ESTIMATED AT 365 CLIPS PER SECTION. FIELD VERIFY.
 - REPLACE ALL HORIZONTAL SEALANT JOINTS WITH IN THE VERTICAL FACE OF THE TREAD/RISER CONDITIONS CONTINUOUS FOR THE ENTIRE UPPER EAST STANDS. SEE PHOTO # 26/A203.
 - INLAD BRASS ROW IDENTIFICATION MASK OFF AN APPROXIMATE 4" SQUARE (FIELD VERIFY SIZE WITH ARCHITECT) AREA OVER THE NUMBERS AND PROVIDE DECK COATING UP TO THIS SHAPE. SEE PHOTO # 27/A203.
 - VERTICAL CONTROL JOINT (CJV) AT END PANELS. REPLACE AT TOP AND BLEACHER SIDE ONLY. SEE PHOTO # 28/A203.
 - REMOVE EXISTING JOINT COVER. APPLY WATERPROOF DECK COATING AND RE-INSTALL JOINT COVER. SEE PHOTO # 29.
 - VERTICAL CONTROL JOINT AT TOP WALL. REPLACE. SEE PHOTO # 19/A203.
 - PROVIDE CONCRETE REPAIR AT SLOPED TOP WALL EDGE. TYPICAL FOR 5 LOCATIONS ALONG TOP WALL. SEE PHOTO # 32/A203.
- JOINT SYSTEM SCHEDULE:**
- EJ TYPE 'A' - WABO SAFETY FLEX**
PROVIDE JOINT TYPE "B" AT JOINTS LESS THAN 1". PROVIDE WABO WEATHER SEAL AT JOINT WIDTHS OF 1" AND GREATER. PROVIDE 12" WIDE WABO SAFETY FLEX JOINT COVER CONTINUOUS. FIELD CUT AND MITER FOR PROPER FIT AND PROFESSIONAL APPEARANCE. CONTRACTOR IS TO FIELD VERIFY JOINT WIDTH PRIOR TO BID.
- EJ TYPE 'A' - WABO UREFLEX (ADD ALTERNATE #2)**
FIELD VERIFY 4 COORDINATE WITH EXISTING SLAB RECESS FOR REPLACEMENT OF EXISTING WABO UREFLEX JOINTS. KNOWN LOCATIONS ARE INDICATED. CONFIRM LOCATIONS WHERE RECESS EXISTS.
- EJ TYPE 'B' - BACKER ROD (CLOSED CELL) 4 SEALANT**
- EJ TYPE 'C' - JOINT SEALANT CANT BEAD.**
PROVIDE BACKER ROD WHERE REQUIRED.
- EJ TYPE 'D' - WABO SEISMIC WEATHER SEAL**
- EJ TYPE 'E' - WABO UREFLEX**
FIELD VERIFY AND COORDINATE WITH EXISTING SLAB RECESS FOR REPLACEMENT OF EXISTING WABO UREFLEX JOINTS.
- EJ TYPE 'F' - WABO EVAZOTE LV**
(ONLY AT JOINT WIDTHS 1" AND GREATER)
- PROVIDE JOINT TYPE "B" AT JOINTS LESS THAN 1". BOTH JOINT METHODS ARE TO RECEIVE URETHANE SEALANT TOPPING (3/8" MINIMUM AT EVAZOTE LV CONDITIONS) TO PROTECT AGAINST HEELS AND TO PROVIDE CONSISTENT 4 UNIFORM APPEARANCE. (CONTRACTOR MUST VERIFY JOINT WIDTHS PRIOR TO BID).



Jumper Carter Sease
Architects PA
412 Meeting Street
West Columbia
South Carolina

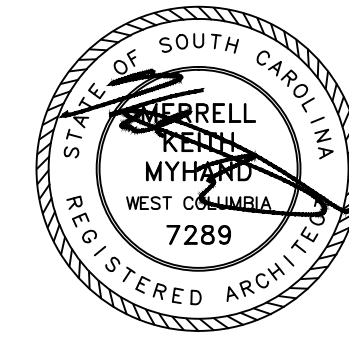
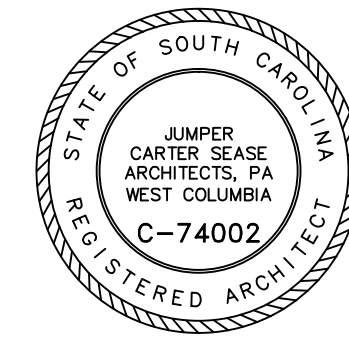
STATE OF SOUTH CAROLINA
JUMPER CARTER SEASE ARCHITECTS, PA
WEST COLUMBIA
REGISTERED ARCHITECT
C-74002

STATE OF SOUTH CAROLINA
BREYER ARCHITECTS, PA
MYRTLE BEACH
REGISTERED ARCHITECT
7289

WBS - WATERPROOFING II (UPPER EAST DECK)
UNIVERSITY OF SOUTH CAROLINA
COLUMBIA, SOUTH CAROLINA

REVISIONS:

DRAWN BY: SL
CHECKED BY: KM
COMM NO: 12115
DATE: MARCH 28, 2013
SHEET TITLE: PARTIAL PLAN VIEW - EAST STANDS UPPER DECK
SHEET NO: A201

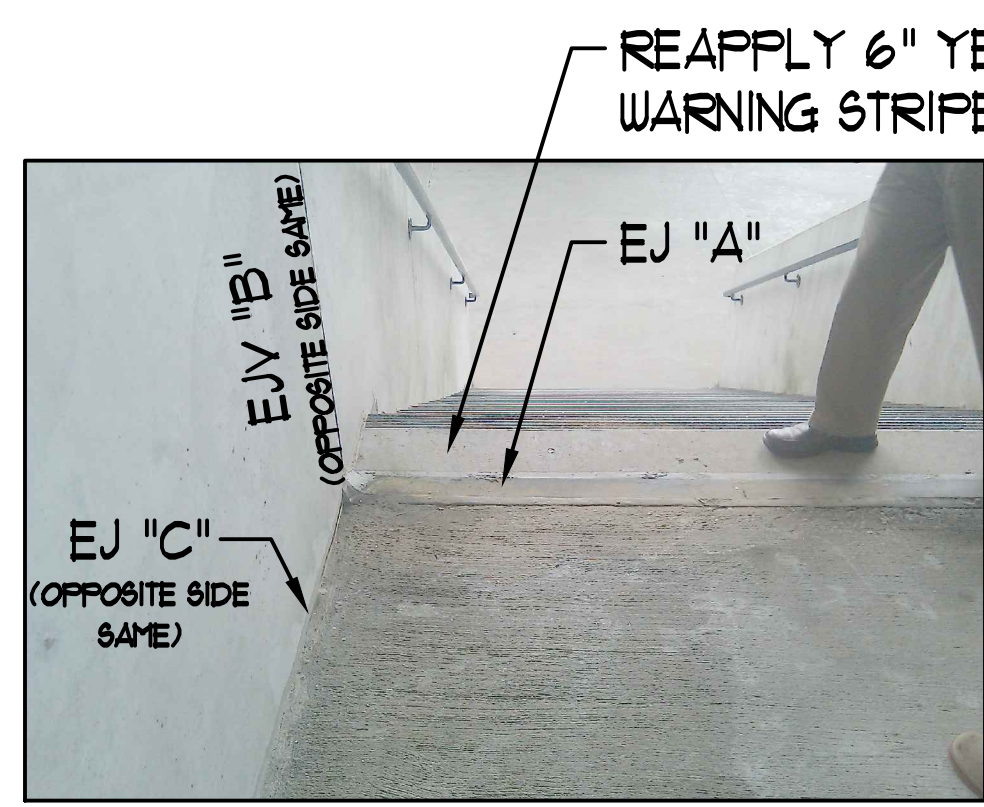


These drawings are the property of Jumper Carter Sease Architects, PA and may not be reproduced, copied or used in whole or in part without written consent of the architect and any infringement will be subject to legal action.

REVISIONS:

DRAWN BY: SL
CHECKED BY: KM
COMM NO: 12115
DATE: MARCH 28, 2013
SHEET TITLE:

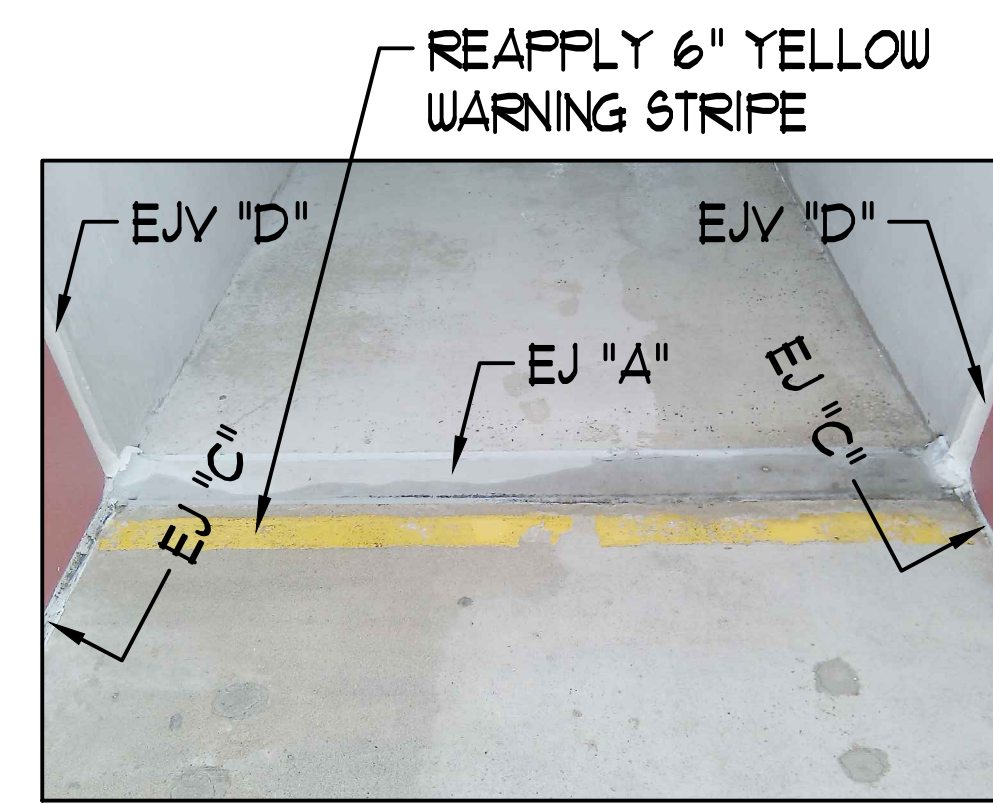
PHOTOGRAPHS



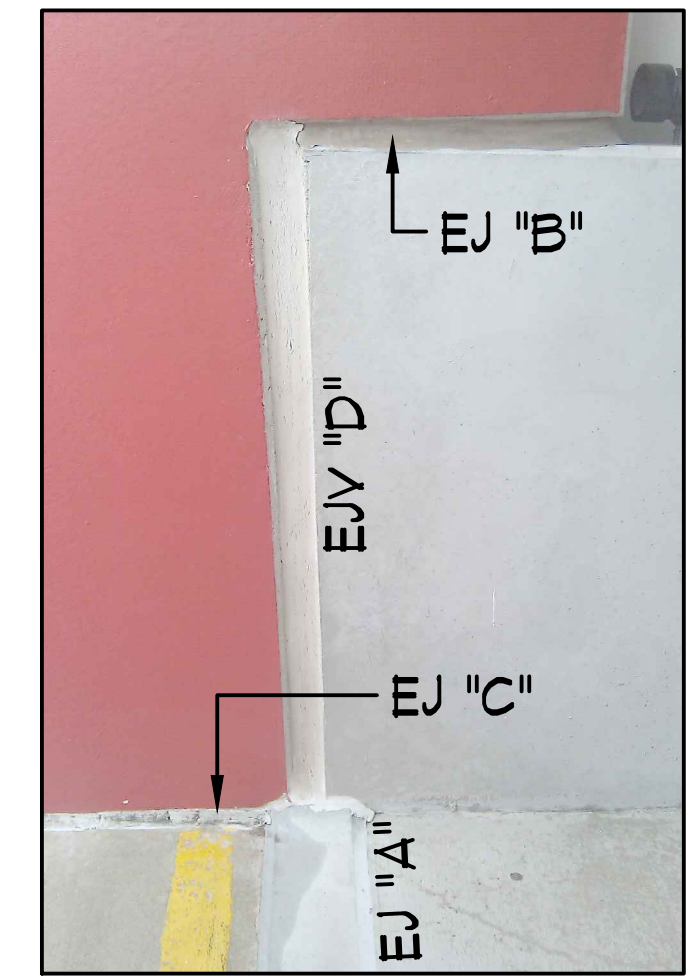
1 VOMITORY WALL HORIZONTAL JOINT, TYPICAL.



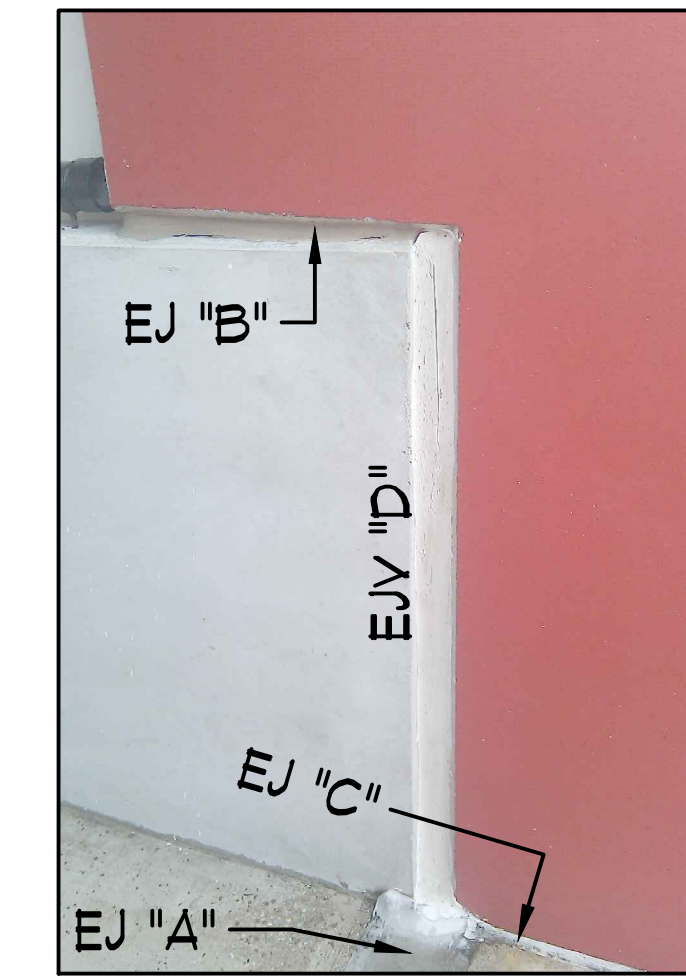
2 VOMITORY WALL VERTICAL JOINT, TYPICAL.



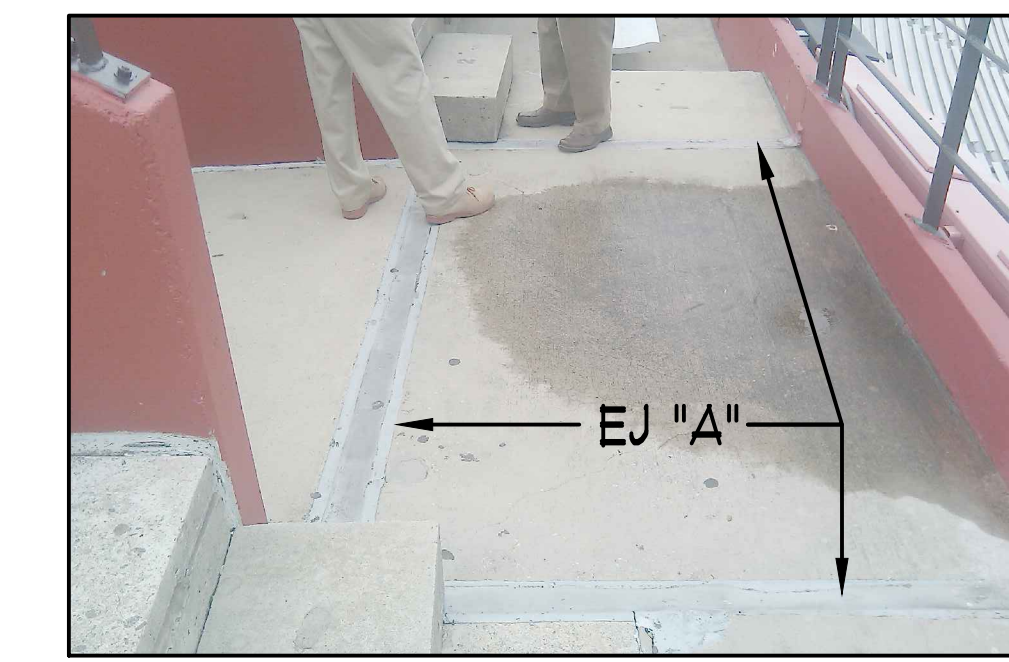
3 HORIZONTAL JOINT @ VOMITORY, TYPICAL.



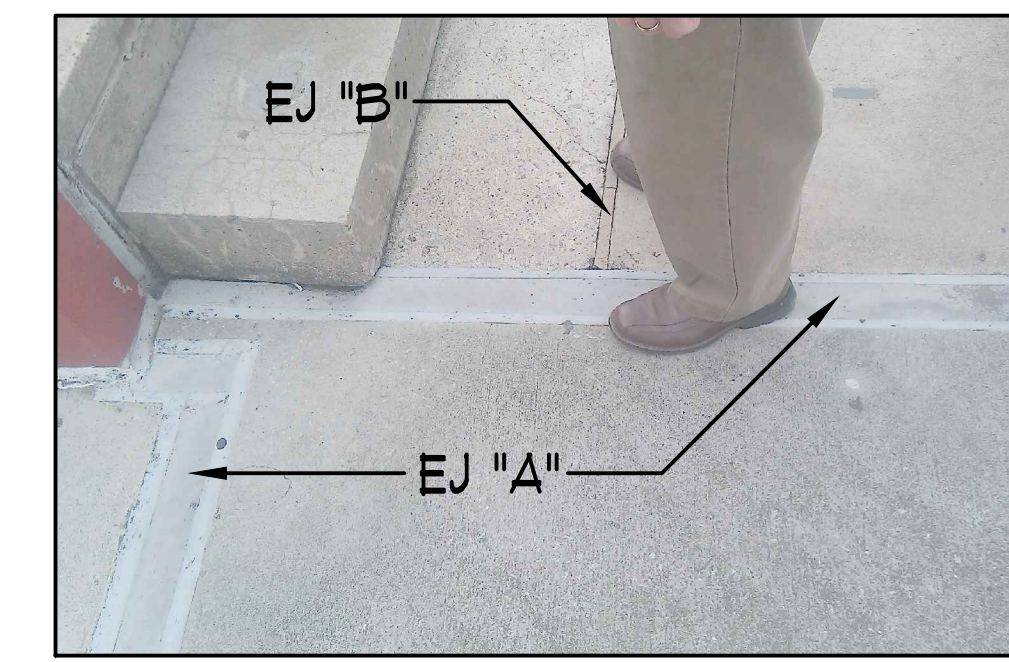
4a VOMITORY WALL VERTICAL & HORIZONTAL JOINTS



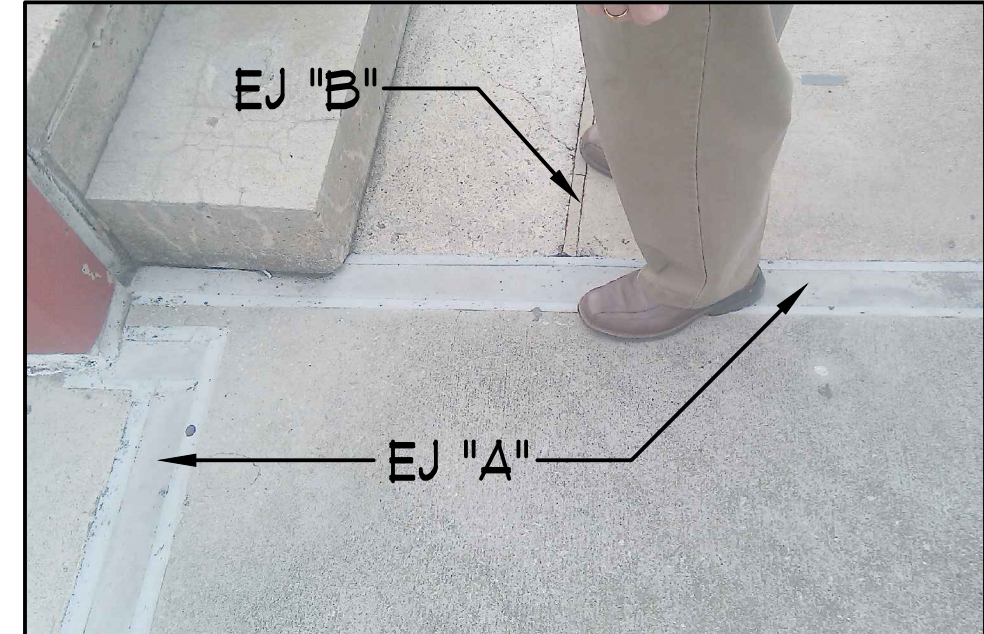
4b VOMITORY WALL VERTICAL & HORIZONTAL JOINTS



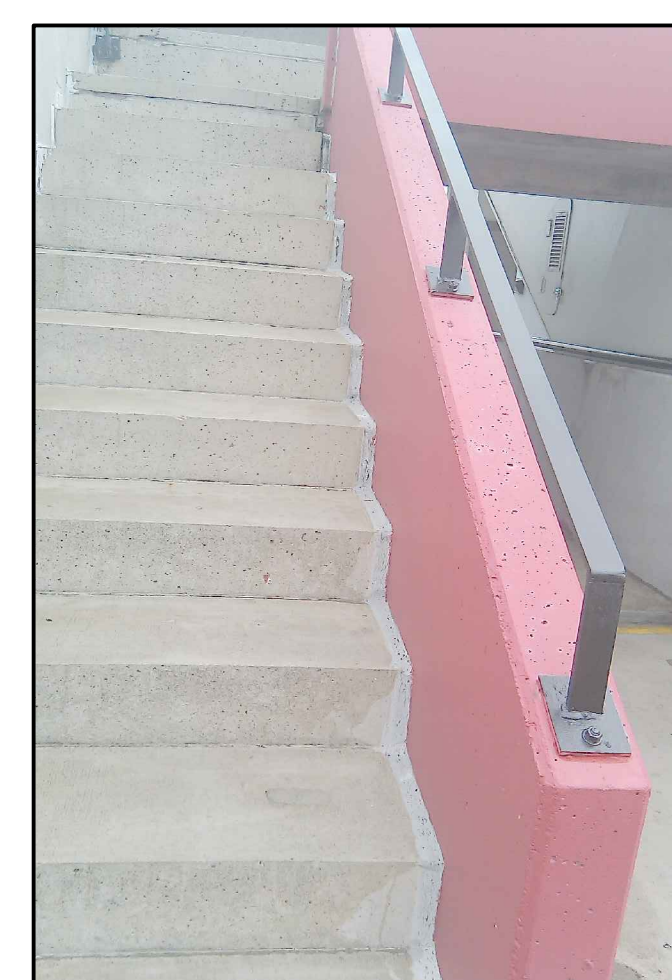
5a JOINTS AT LOWER VOMITORY, TYPICAL.



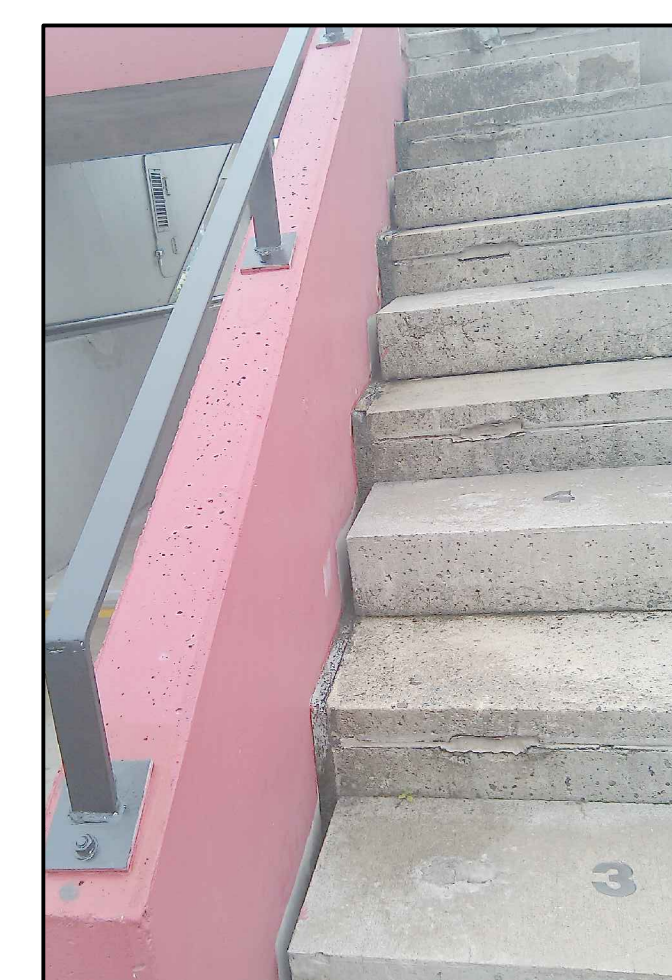
5b JOINTS AT LOWER VOMITORY, TYPICAL.



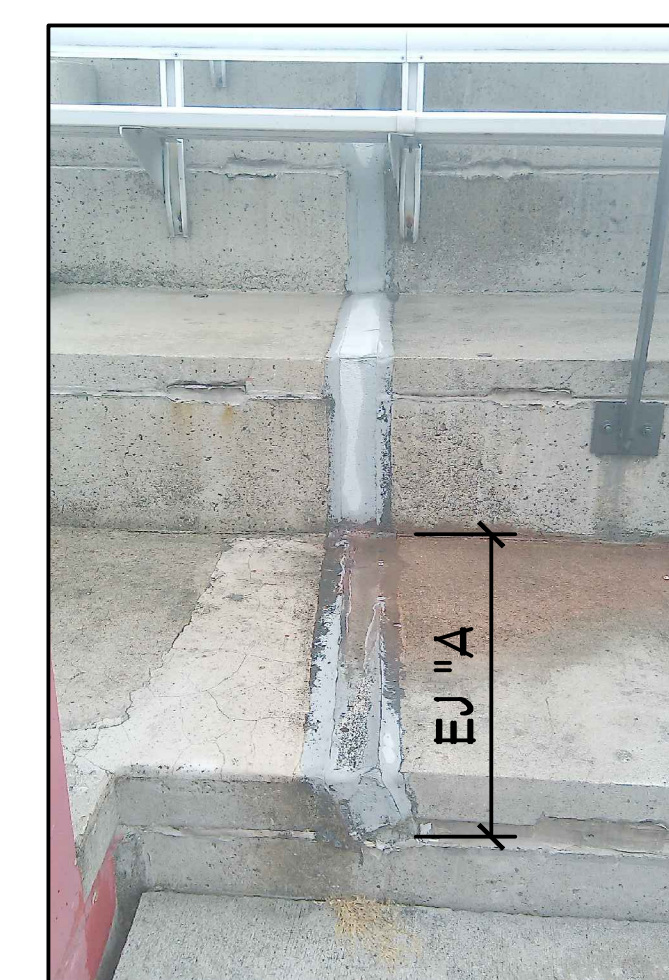
5b JOINTS AT LOWER VOMITORY, TYPICAL.



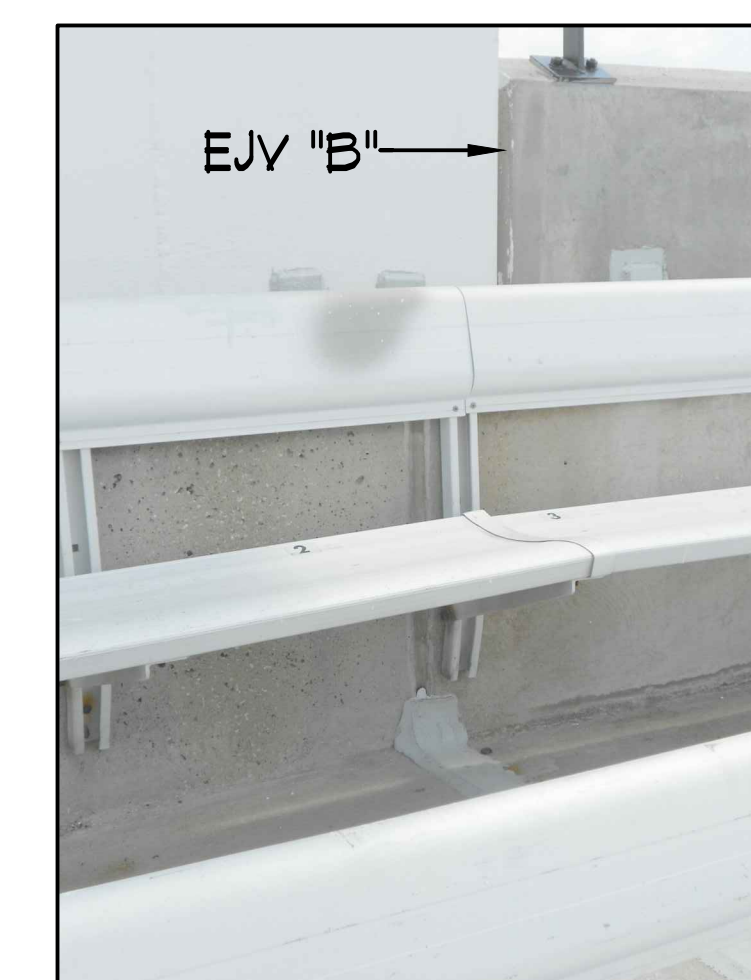
6a JOINTS UP THE SIDE OF VOMITORY, TYP.



6b JOINTS UP THE SIDE OF VOMITORY, TYP.



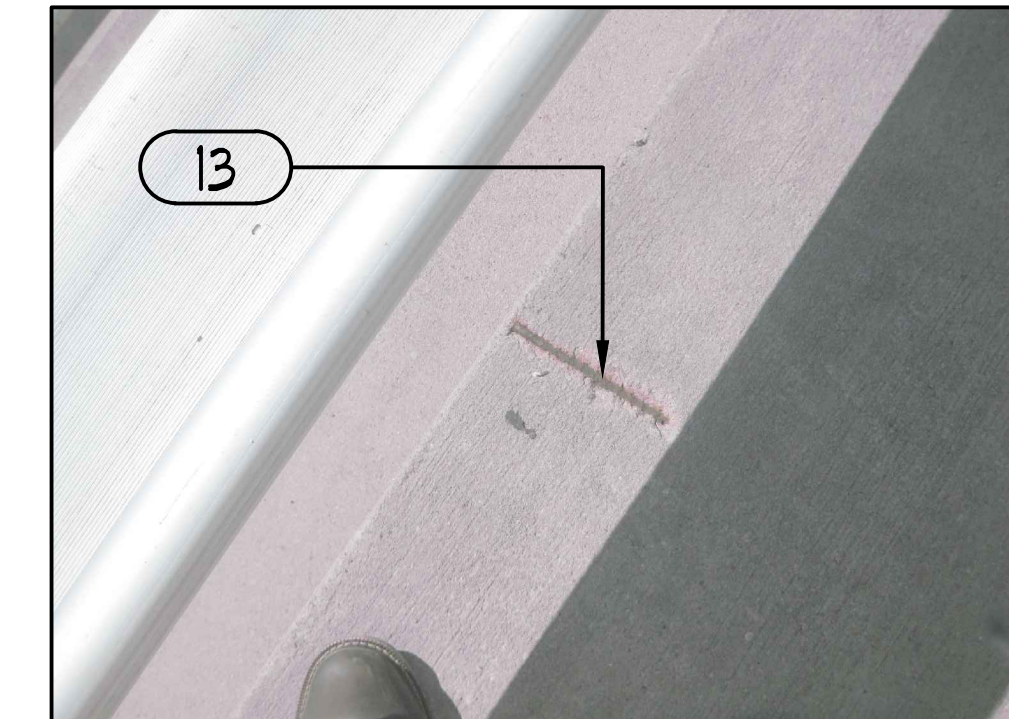
7 EJ @ UPPER AREA, TYPICAL.



8 EJ AT TOP OF UPPER AREA, TYPICAL.



9 EXIST. EX. OF EJ @ TREAD/RISER CONDITION REQUIRING MINOR CONC. REPAIR EFFORTS, TYP.



10a MISCELLANEOUS EXAMPLES OF CONCRETE REPAIRS



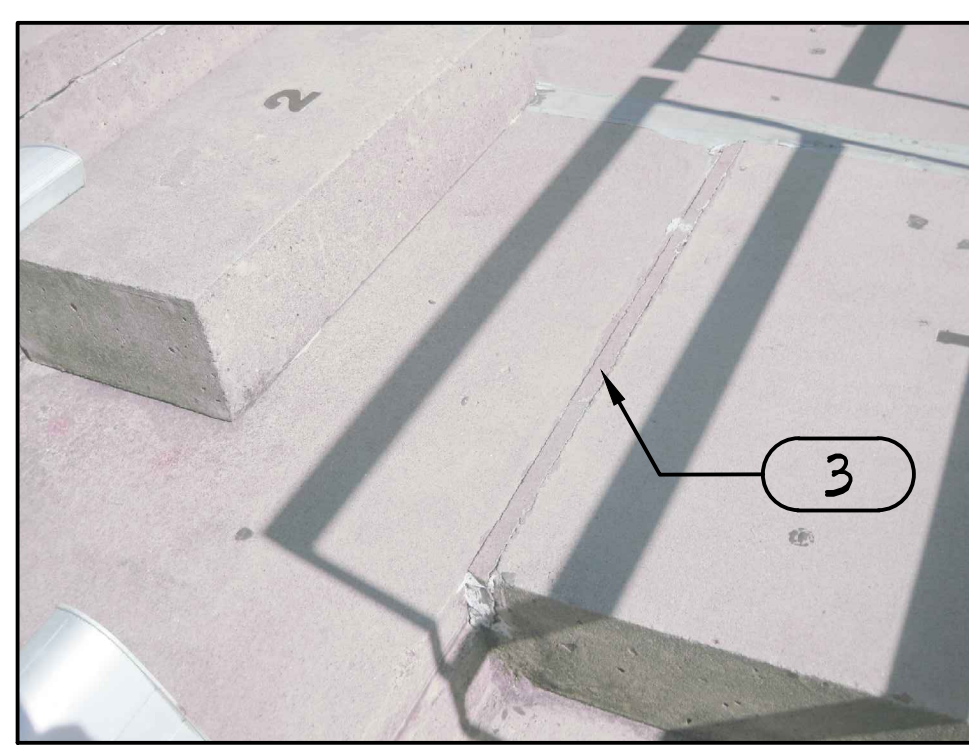
10b MISCELLANEOUS EXAMPLES OF CONCRETE REPAIRS



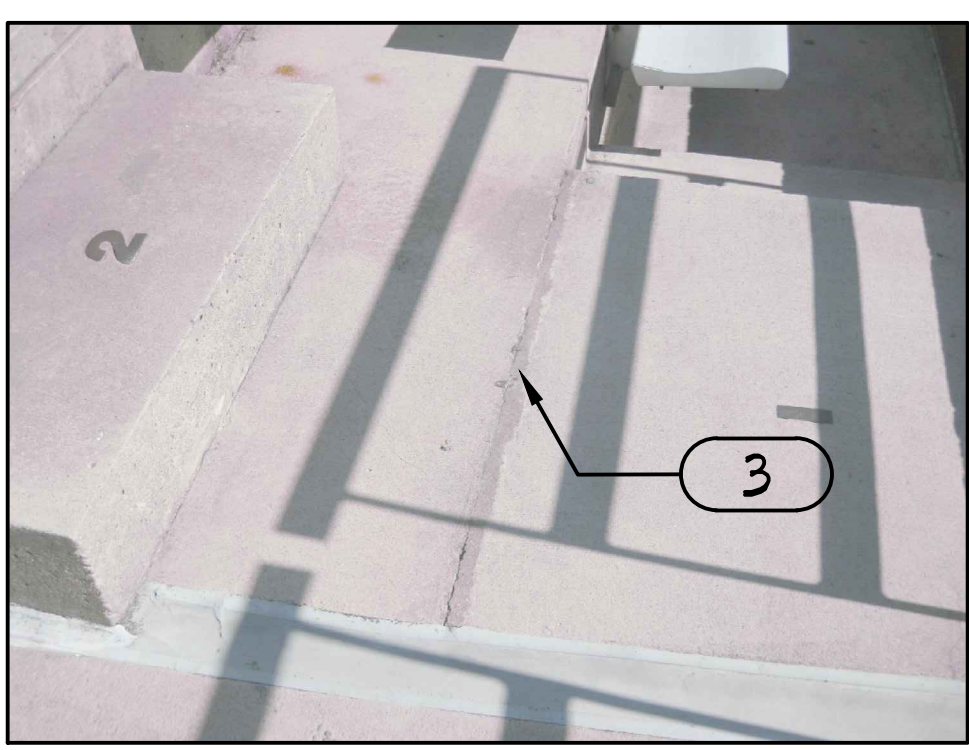
11a EXISTING FLOOR DRAIN



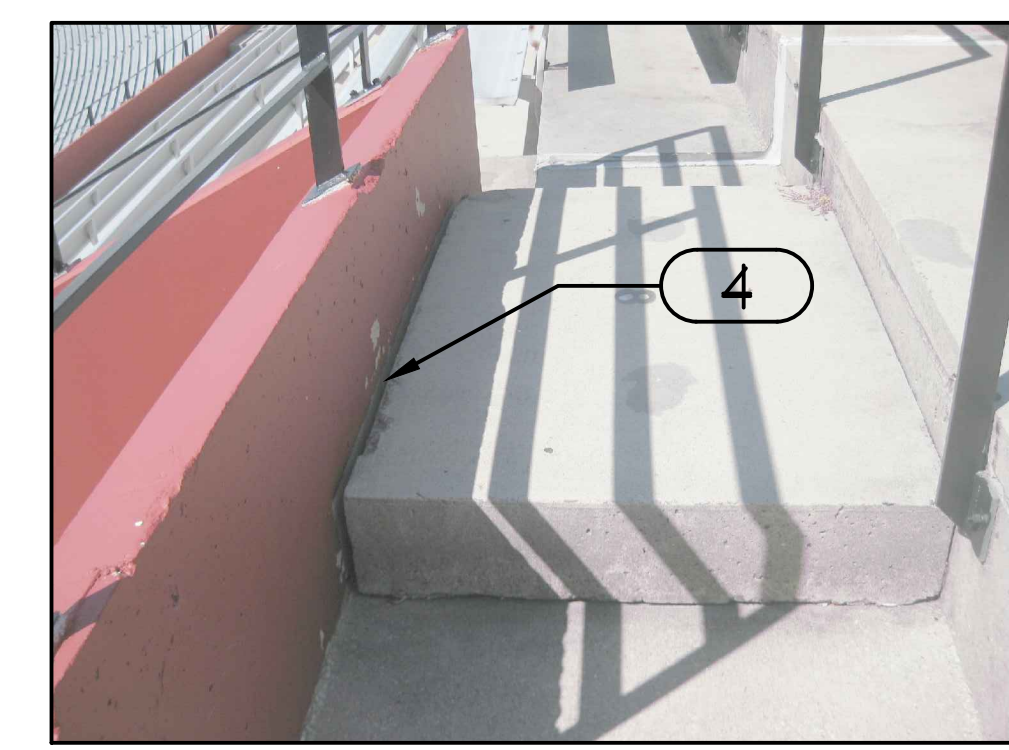
11b EXISTING FLOOR DRAIN (W/ COVER)



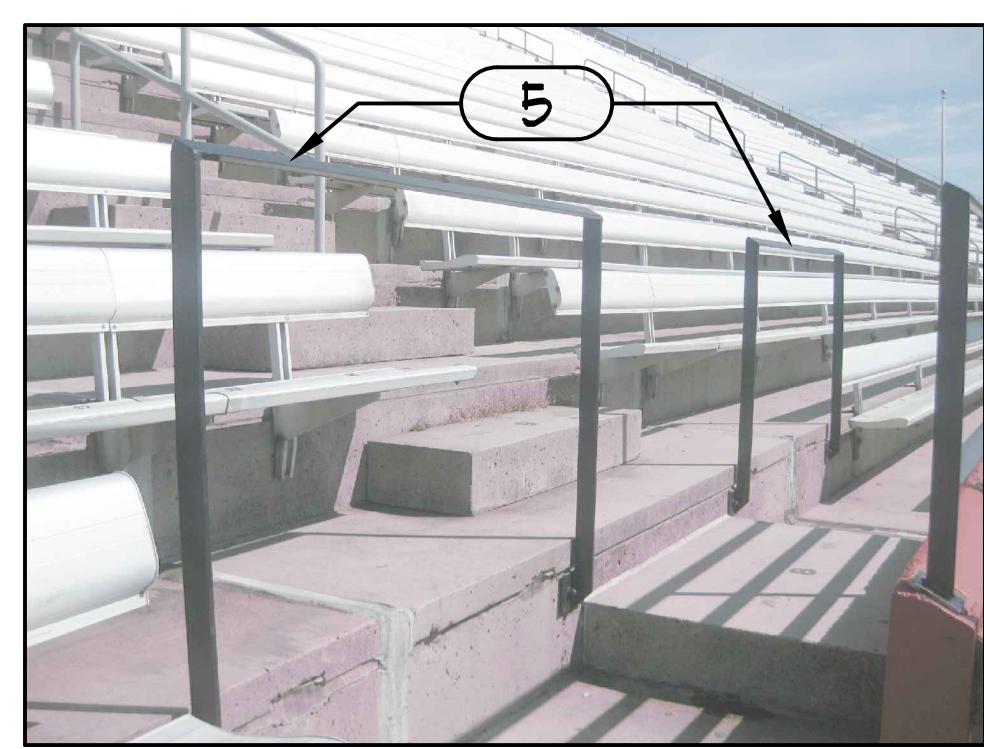
12 EXISTING JOINTS AT BOTTOM OF VOMITORY STEPS



12 EXISTING JOINTS AT BOTTOM OF VOMITORY STEPS



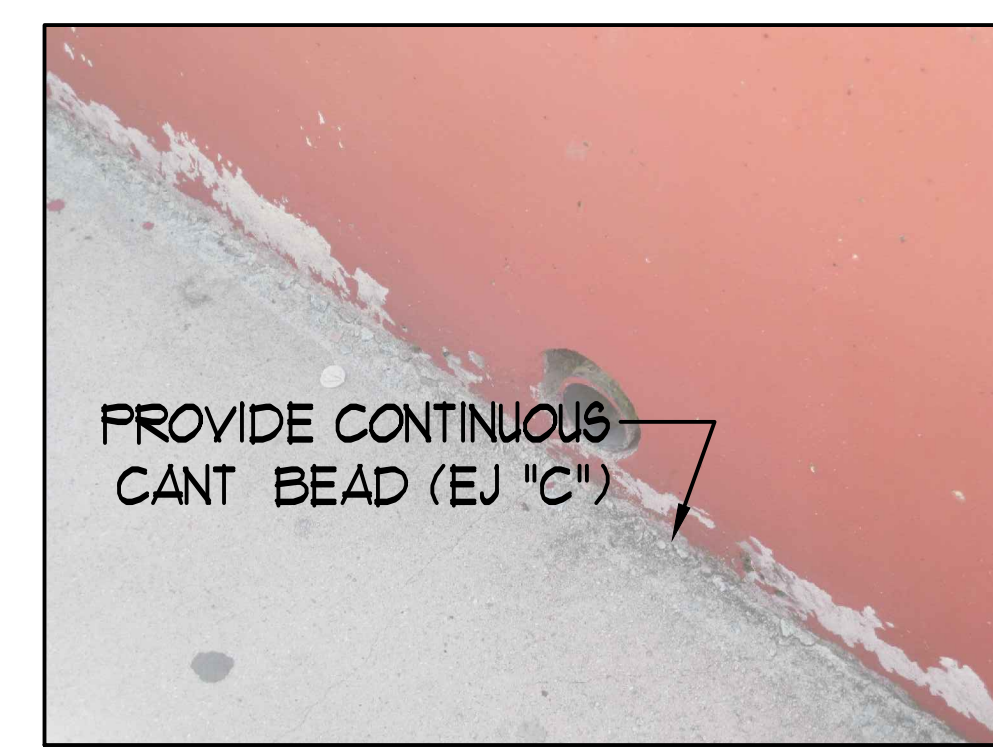
13 STEP AT TOP OF VOMITORIES



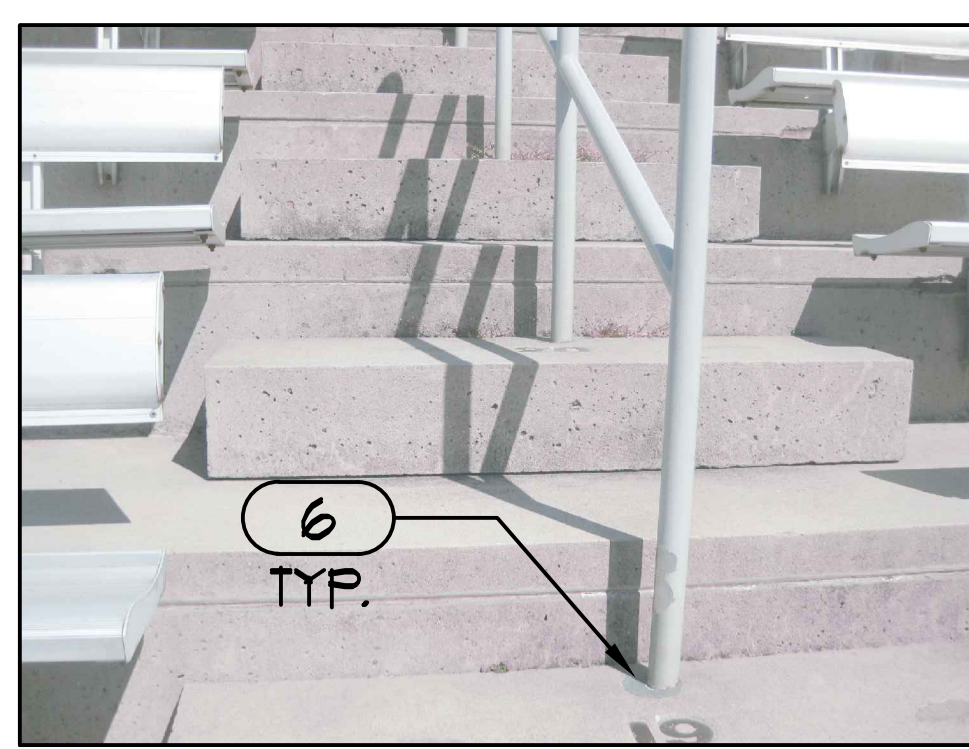
14a RAILINGS AT TOP OF VOMITORY



14b VOMITORY RAILINGS MOUNTS



15 FLOOR TO WALL AT FIELD LOW WALL



16 EXISTING RAILINGS TO REMAIN



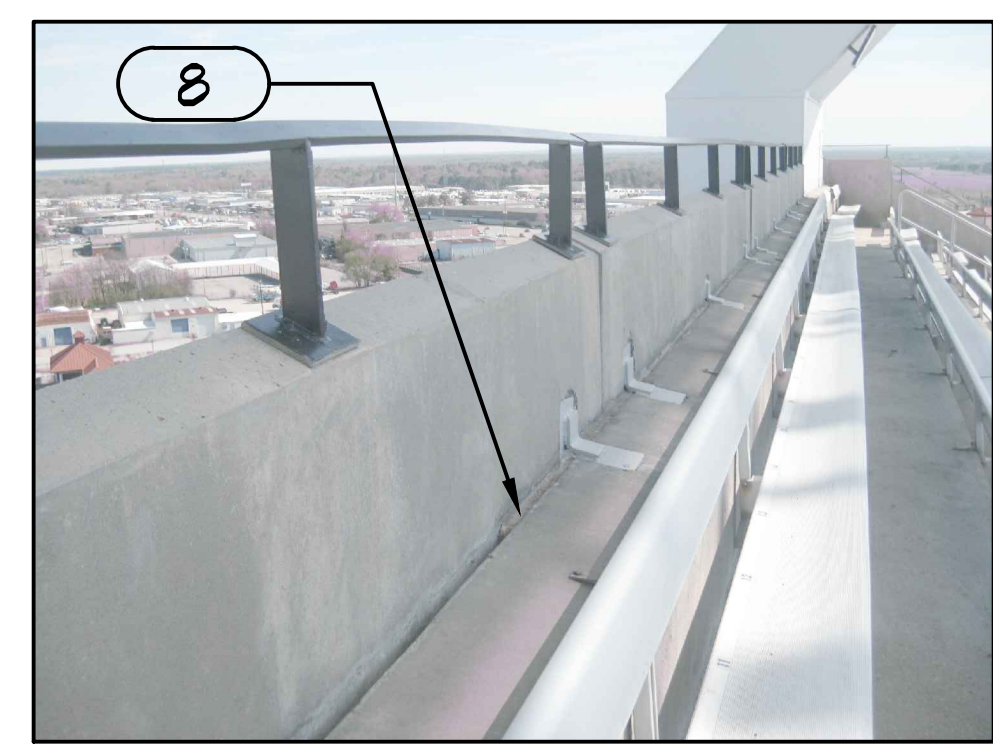
17 "NO STANDING" AREA AT 505/506



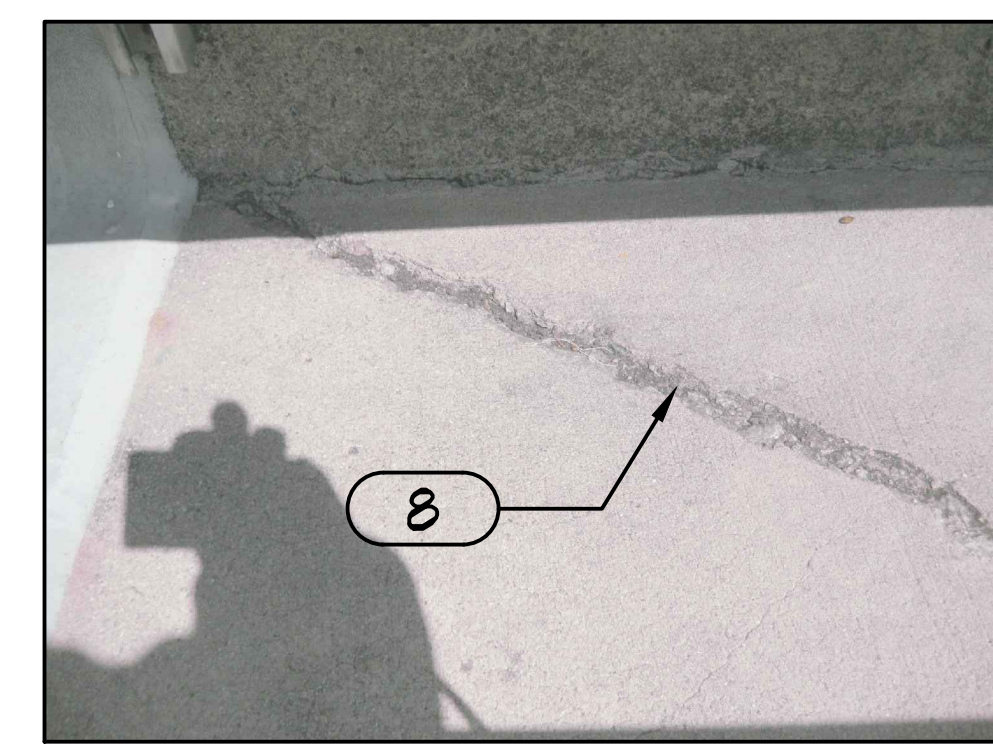
18a TYPICAL STEEL PLATE CONDITION (SOME VARY)



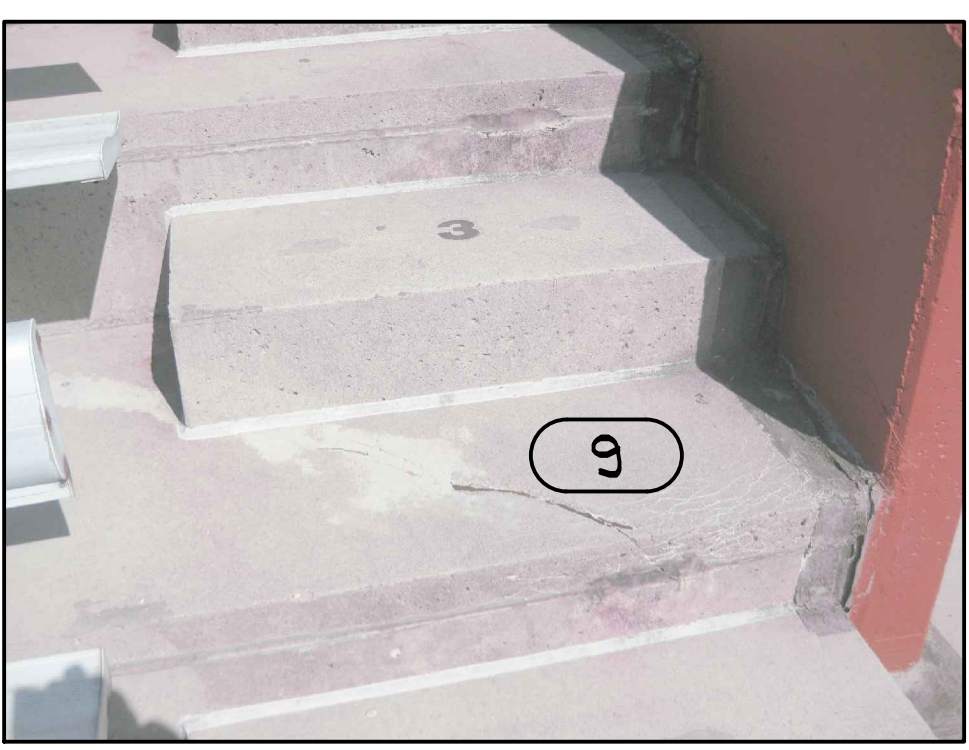
18b TYPICAL STEEL PLATE CONDITION (SOME VARY)



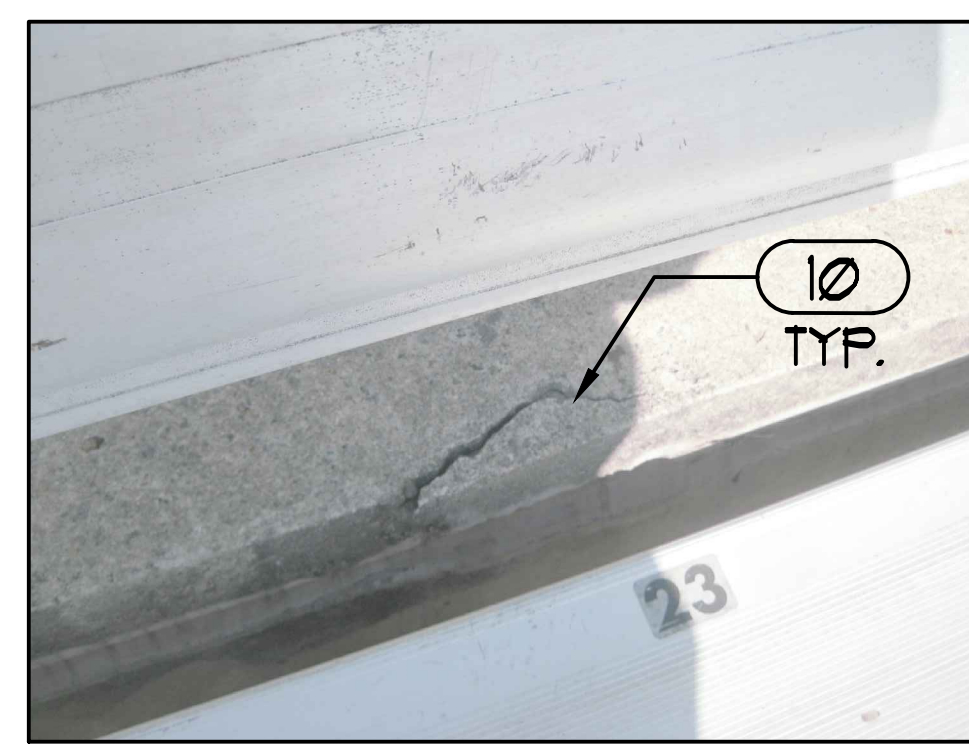
19 JOINT REPLACEMENT AT TOP WALL (HORIZONTAL)



20 SLAB FRACTURE EXAMPLE



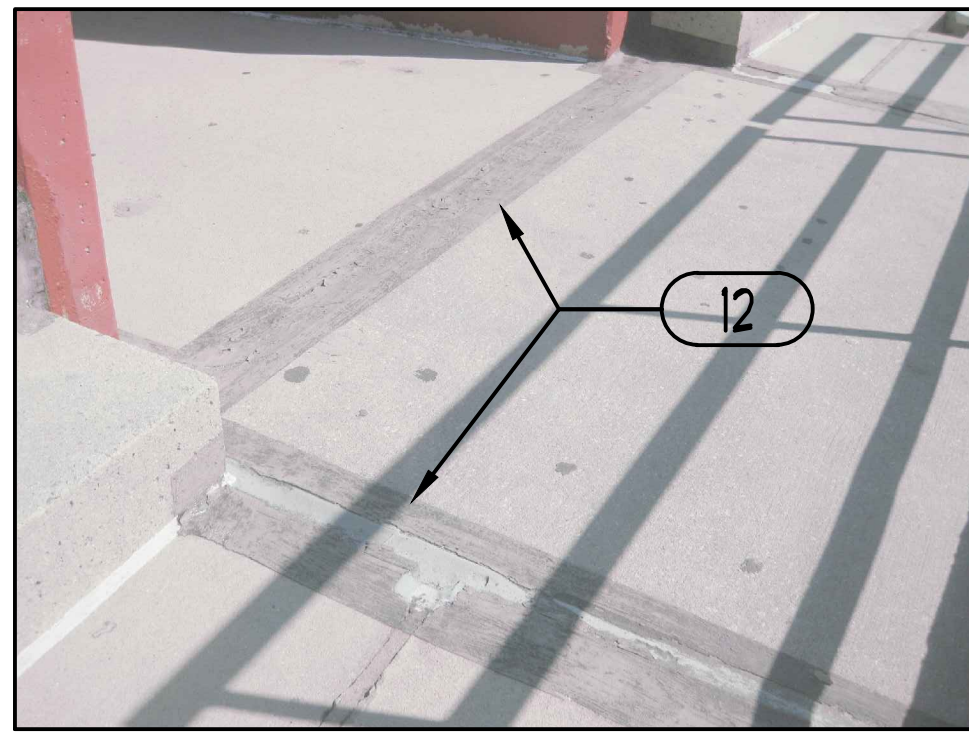
21 SPALDING TREAD



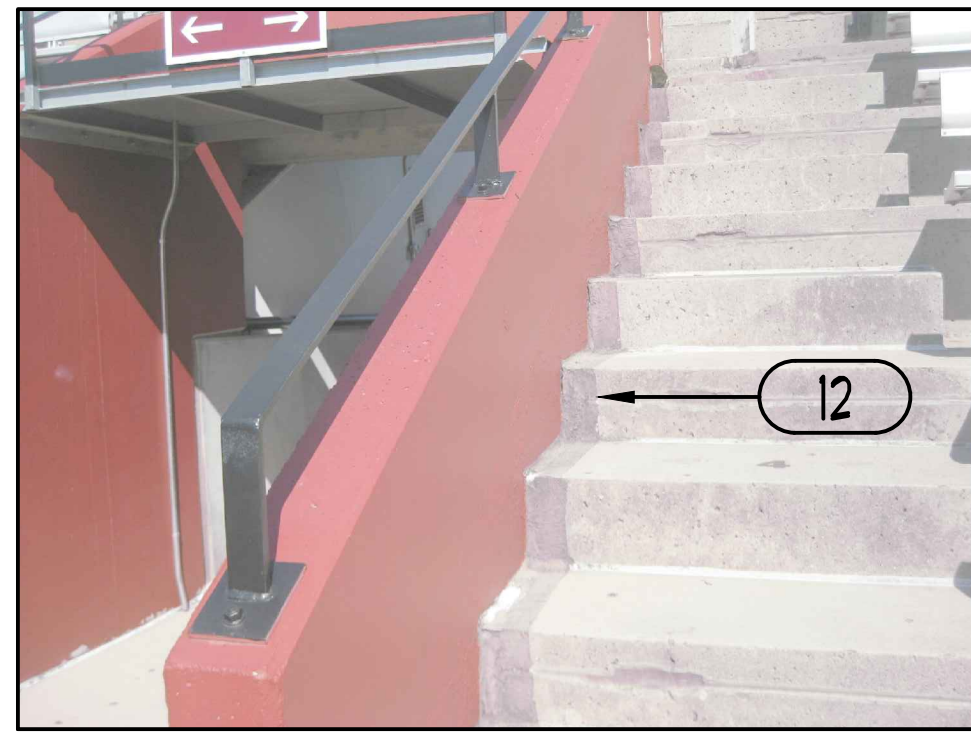
22 TYPICAL TREAD EDGE FRACTURE



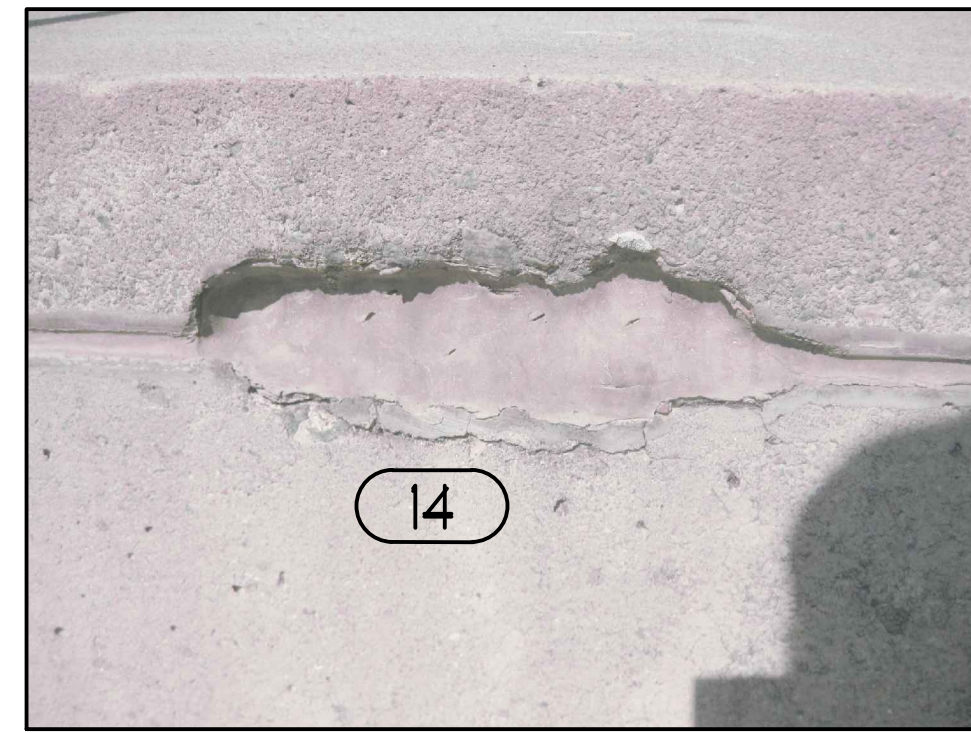
23 EXPOSED ABANDONED METAL CONDITION



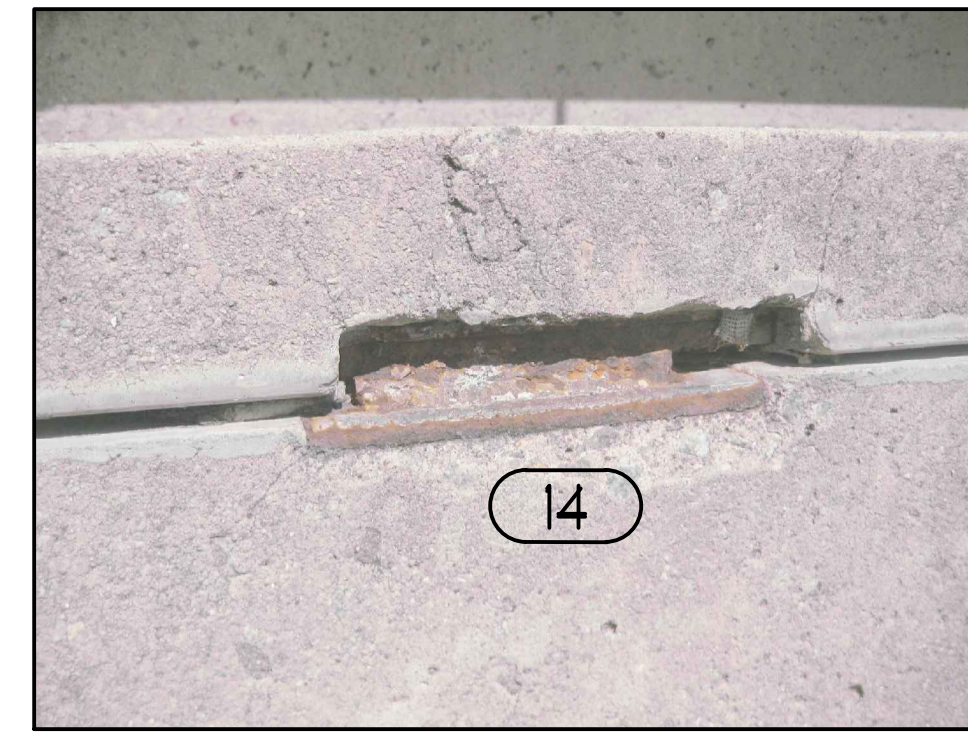
24a PREVIOUS VOMITORY LEAK REPAIR ATTEMPTS



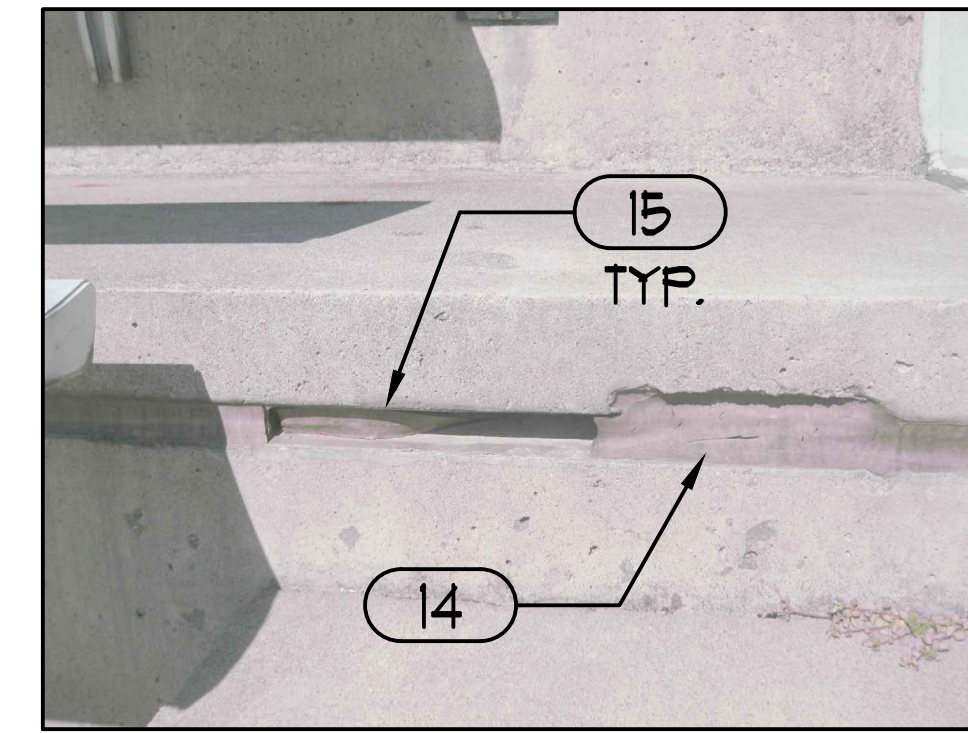
24b PREVIOUS VOMITORY LEAK REPAIR ATTEMPTS



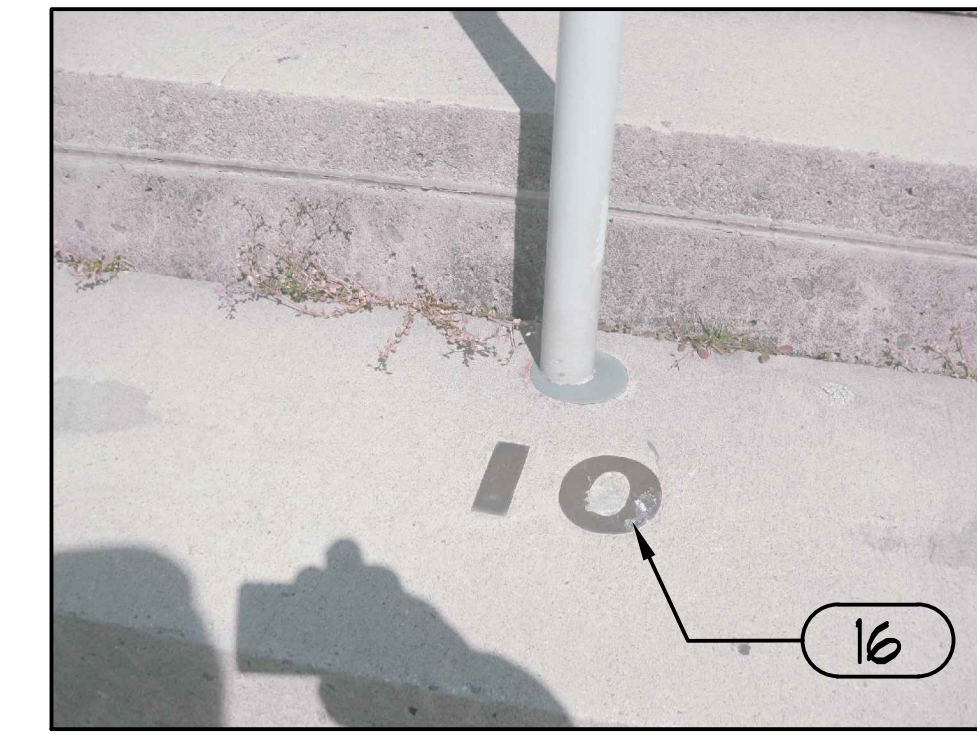
25a STEEL CLIP CONDITION



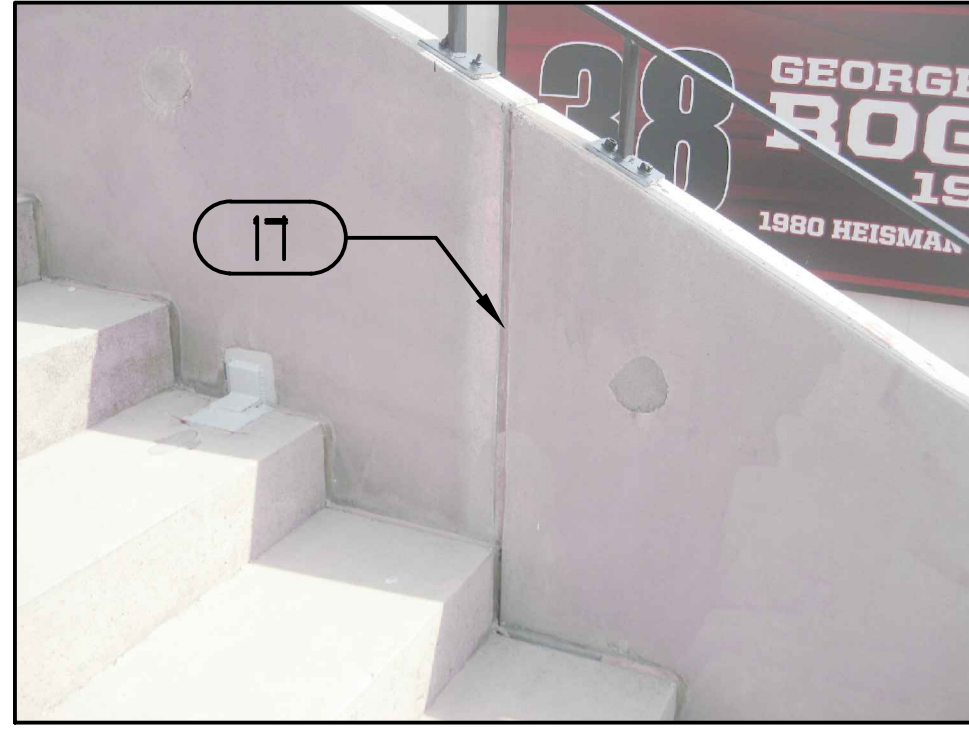
25b STEEL CLIP CONDITION



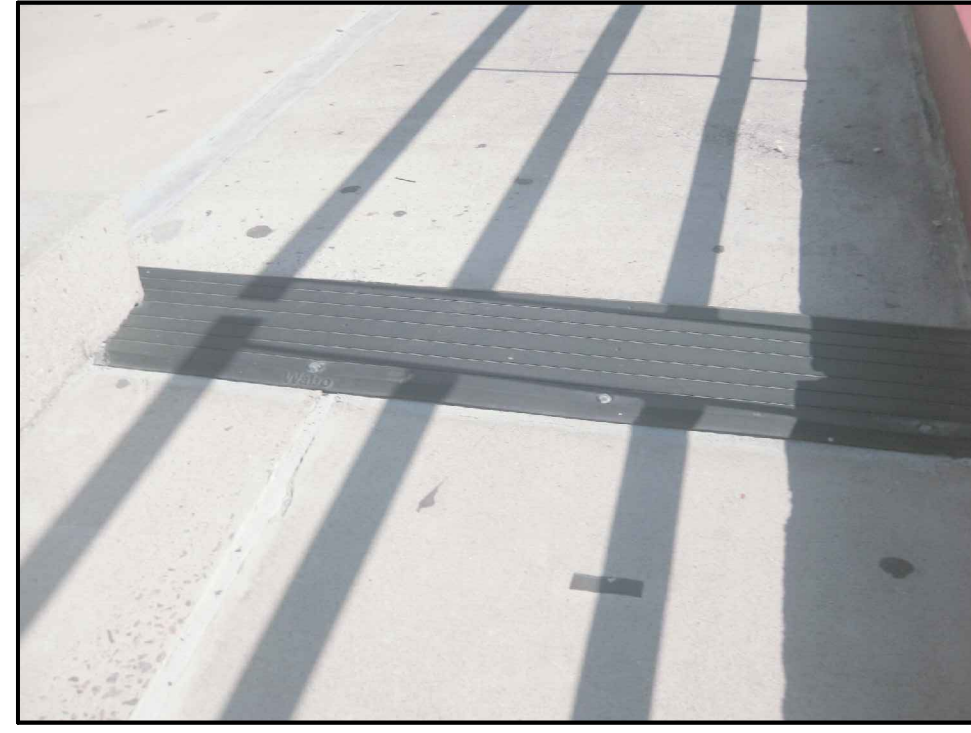
26 TREAD/RISER JOINT CONDITION



27 INLAID BRASS IDENTIFICATION



28 VERTICAL CONTROL JOINT (CJV) AT END PANELS



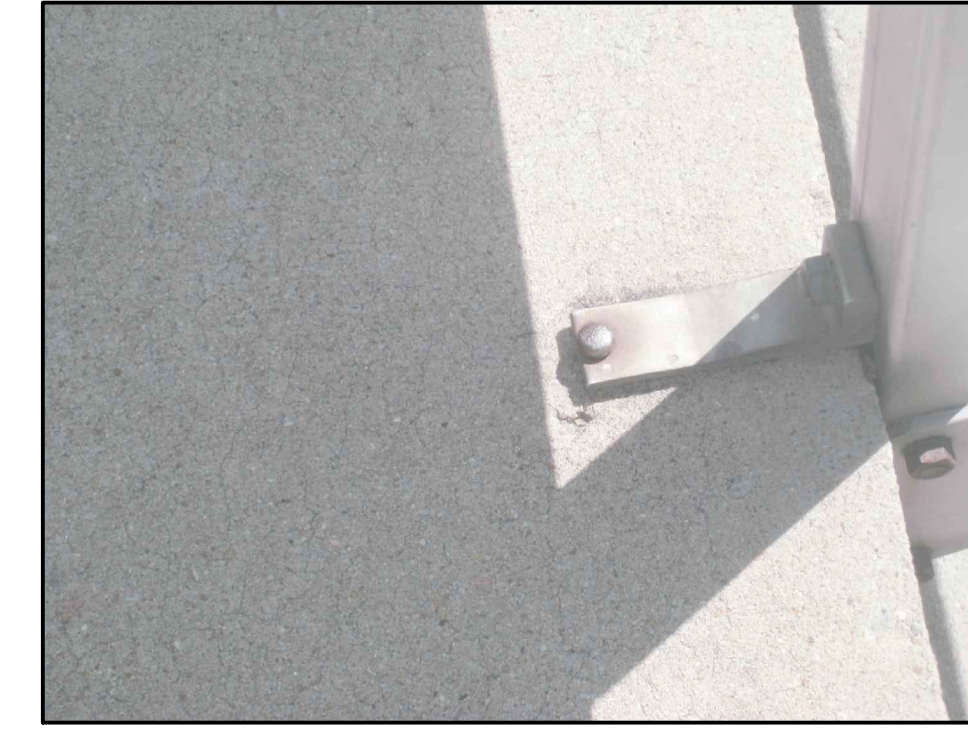
29 EXISTING WABO SAFETY FLEX JOINT COVER



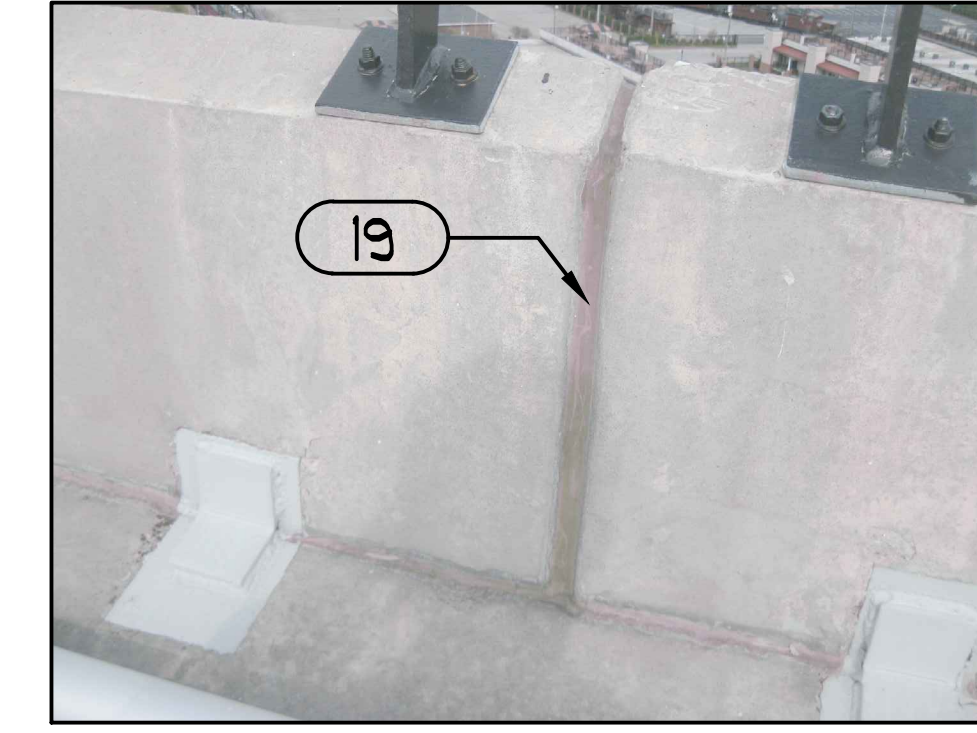
30a BLEACHER BRACKET CONDITION



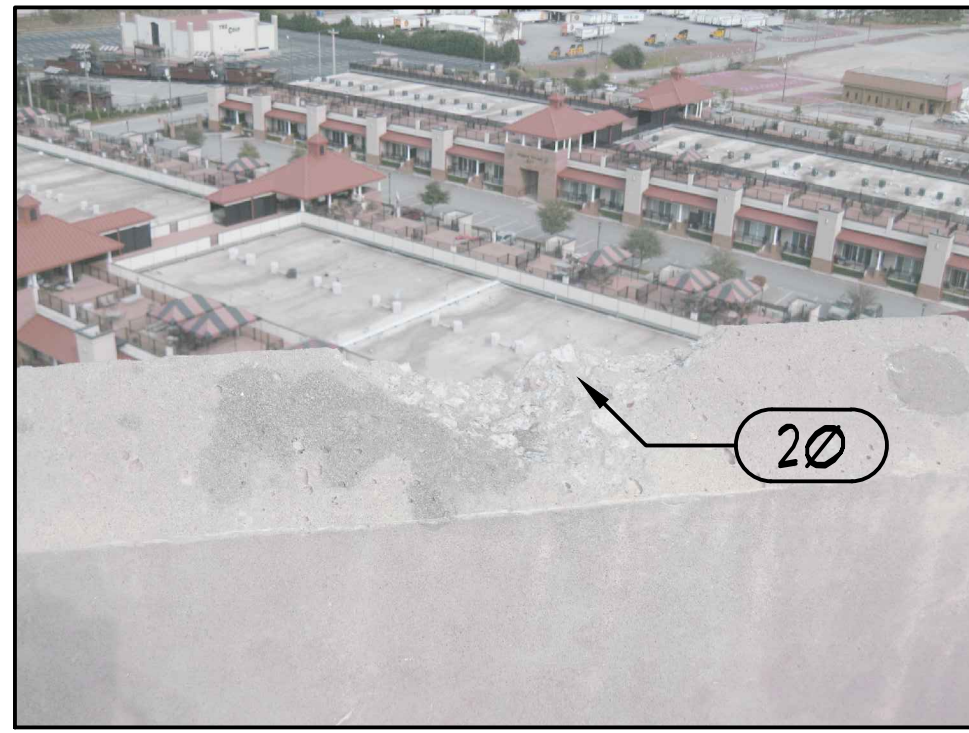
30b BLEACHER BRACKET CONDITION



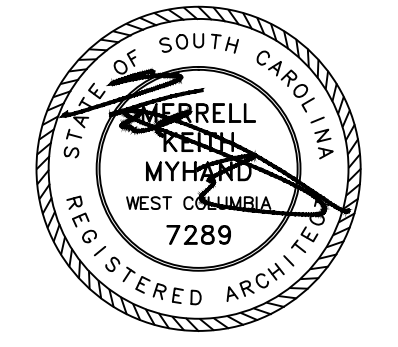
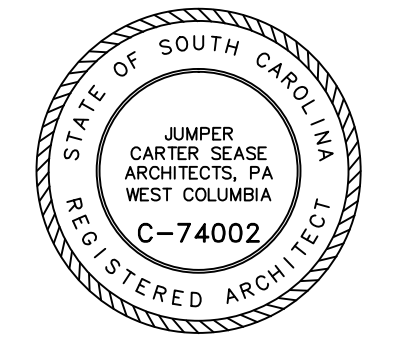
30c BLEACHER BRACKET CONDITION



31 VERTICAL CONTROL JOINT (CJV) AT TOP WALL



32 CHIP AT SLOPED TOP WALL



REVISIONS:

DRAWN BY: SL

CHECKED BY: KM

COMM NO: 12115

DATE: MARCH 28, 2013

SHEET TITLE:

PHOTOGRAPHS

SHEET NO:

A203

These drawings are the property of Jumper Carter Sease Architects, PA and may not be reproduced, copied or used in whole or in part without written consent of the architect and any infringement will be subject to legal action.